



MEETINGS & EVENTS



AN OASIS OF LUXURY

in the Heart of London

Beautiful banqueting suites and majestic ballrooms have made the hotel a coveted venue for impressive events, spectacular gatherings and breath-taking weddings up to 650 people. The Landmark London is the perfect venue with its 11 meeting and event spaces over 22,000 square feet (2,100 square metres).





CONTENTS

ROOM CAPACITIES	04
ROOM DIMENSIONS	05
GRAND BALLROOM	06
GRAND BALLROOM I	08
GRAND BALLROOM II	09
MARBLE BALLROOM	10
CHAMPAGNE ROOM	11
DRAWING ROOM	12
EMPIRE ROOM	13
TOWER SUITE	14
LANDMARK ROOMS & INTERVIEW SUITE	17
RESTAURANTS & BARS	18
ROOMS & SUITES	28
SPA & WELLNESS	30
DIRECTIONS & LOCAL ATTRACTIONS	32
GET IN TOUCH	34

ROOM CAPACITIES

	REC. DRINKS	LUN/ DIN	DINNER & DANCE	SIT DOWN BUFFET	STAND BUFFET	DRINKS & DINNER		THEATRE	CLASSROOM	CABARET	BOARDROOM	U SHAPE
						<i>no dance floor</i>	<i>dance floor</i>	<i>BP</i>	<i>BP/slims</i>	<i>BP</i>	<i>FP</i>	<i>FP</i>
Grand Ballroom	650	504	432	396	500	252	216	512	266/ 336	264	N/A	N/A
Grand Ballroom I	300	240	180	180	250	120	74	210	105/ 119	112	42	50
Grand Ballroom II	300	240	180	180	250	120	74	210	105/ 119	112	42	50
Marble Ballroom	500	408	348	324	400	204	144	300	176/ 190	160	N/A	N/A
Champagne Room	70	36	N/A	36	40	24	N/A	70	30	24	24	20
Drawing Room	300	180	132	132	200	96	72	120	70/90	72	40	30
Empire Room	250	168	120	120	180	84	60	180	100/ 120	88	40	40
Tower Suite	70	36	N/A	36	40	36	N/A	36	21	24	25	20
Champagne Bar	250	120	N/A	120	200	N/A	N/A	N/A	N/A	N/A	N/A	N/A
Landmark I	15	10	N/A	12	12 WL	12 oval	N/A	21	N/A	N/A	10	N/A
Landmark II	40	36	N/A	24	30 WL	24	N/A	36	21	24	20	18
Landmark III	40	36	N/A	24	30	24	N/A	36	21	24	20	18
Landmark II & III	80	72	N/A	60	75	50	N/A	70	42	42	42	36

ROOM DIMENSIONS

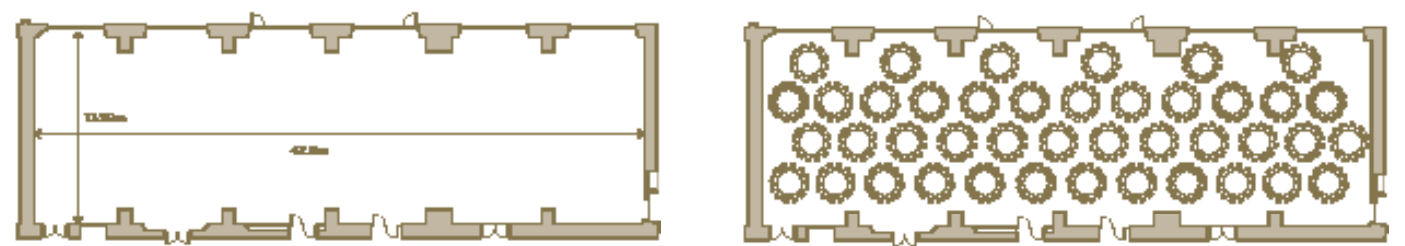
	Width		Length		Chandelier Height		Max Height		Areas	
ROOMS	Metres	Feet	Metres	Feet	Metres	Feet	Metres	Feet	Metres	Feet
GRAND BALLROOM	13.59	44'6	42.90	144'	4.00	13'2"	5.49	18'	610	6565
MARBLE BALLROOM	13.50	44'5"	35.77	117'3	3.32	10'11"	6.25	20'6"	478	5145
MARBLE HALL	7	23'0"	29	95'14"	-	-	2.71	8'10"	201	2163
DRAWING ROOM	12.86	42'2"	21.44	70'4"	3.7	12'1"	6.35	20'	254	2734
GRAND BALLROOM I	13.59	44'6"	21.81	71'6"	4	13'2"	5.49	18'	318	3422
GRAND BALLROOM II	13.59	44'6"	21.10	69'3"	4	13'2"	5.49	18'	292	3143
EMPIRE ROOM	7.82	25'7"	26.05	85'5"	3.6	11'10"	6.23	20'5"	222	2389
TOWER SUITE	6.59	21'7"	12.9	23'7"	-	-	9.11	29'11"	57	613
CHAMPAGNE ROOM	7.81	25'7"	10.06	33'	2.66	8'6"	3.86	12'7"	81	871
LANDMARK 1	5.43	17'9"	10.93	35'10"	-	-	2.38	7'10"	49	527
LANDMARK 2	6.95	22'10"	8.23	27'	-	-	2.38	7'10"	54	581
LANDMARK 3	6.95	22'10"	7.92	26	-	-	2.38	7'10"	57	613
LANDMARK 2 & 3	6.95	22'10"	16.15	53	-	-	2.38	7'10"	111	1194
INTERVIEW SUITE	2.5	8.2	6.9	22.64	-	-	2.38	7'10"	16	172

GRAND BALLROOM - GROUND FLOOR



This beautiful room provides an extensive area with high ceilings and natural lighting for large catering events and wedding receptions. The room can be divided into two separate rooms - Grand Ballroom I & II

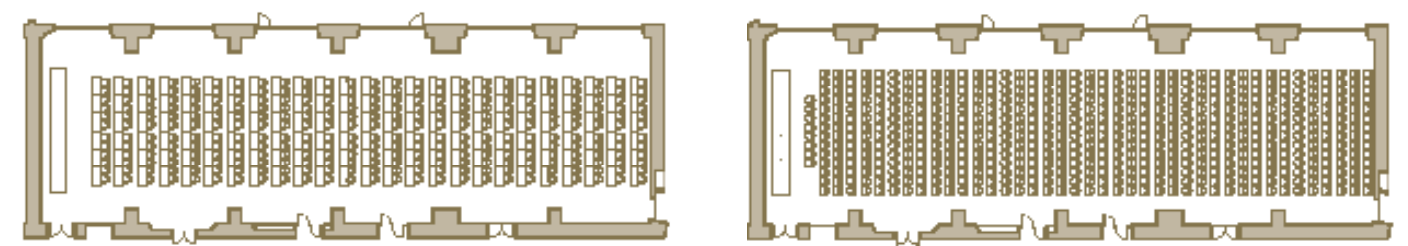
DIMENSIONS	DINNER / DANCE
	Capacity: 432 Rounds of 12



GRAND BALLROOM - GROUND FLOOR



CLASSROOM	THEATRE
Capacity: 336	Capacity: 512

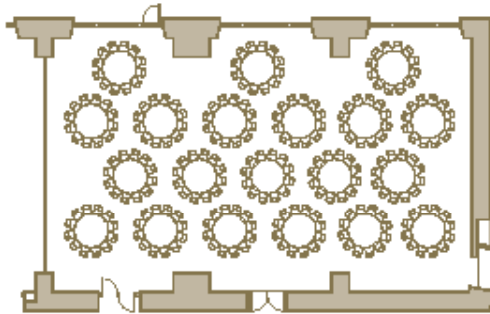


GRAND BALLROOM I

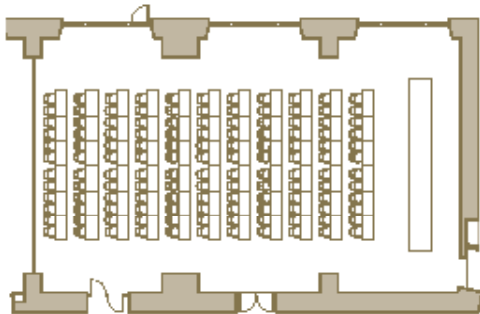


Medium-sized function rooms of distinctive identity and charm with beautiful chandeliers and high ceilings.

LUNCH / DINNER
Capacity: 240 Rounds of 12



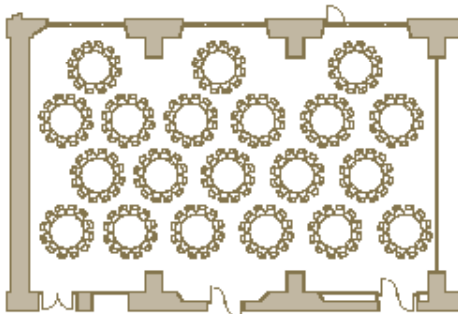
CLASSROOM
Capacity: 119



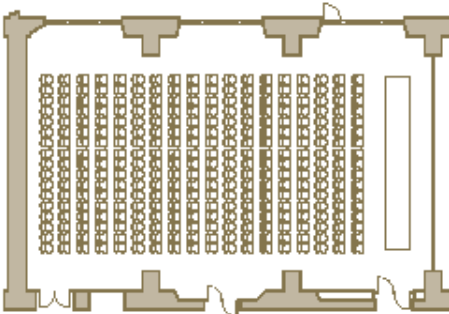
GRAND BALLROOM II



LUNCH / DINNER
Capacity: 240 Rounds of 12



THEATRE
Capacity: 210

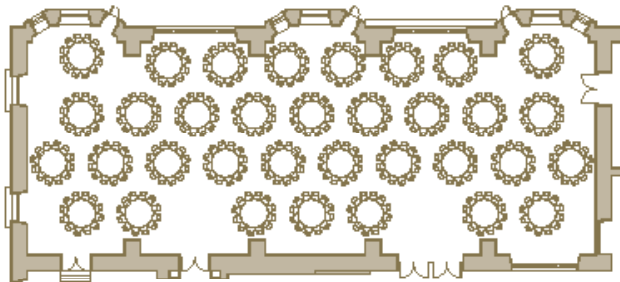


MARBLE BALLROOM - GROUND FLOOR

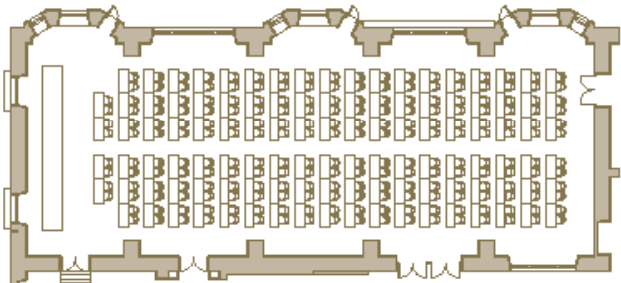


Ideal venue for large gatherings and drink receptions and it is interconnected with the Champagne Room.

DINNER / DANCE
Capacity: 408 Rounds of 12



CLASSROOM
Capacity: 190



MARBLE BALLROOM - GROUND FLOOR



CHAMPAGNE ROOM
GROUND FLOOR

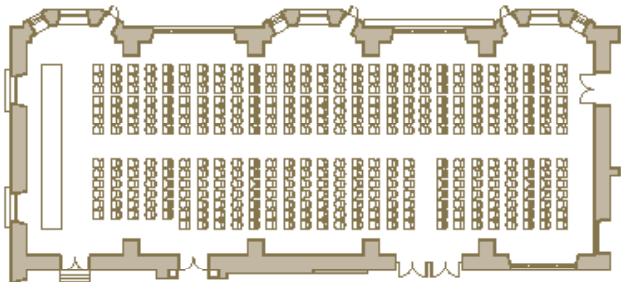
Can be used as a green room, storage room or event team room.

DRINKS RECEPTION
Capacity: 70

THEATRE PLAN
Capacity: 70

LUNCH / DINNER
Capacity: 36

THEATRE PLAN
Capacity: 300

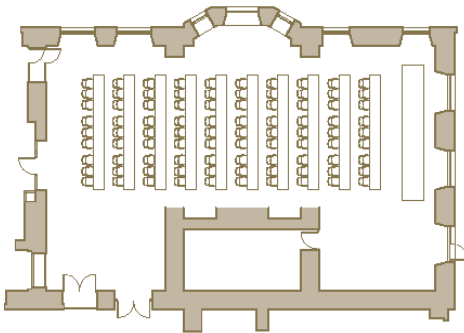


DRAWING ROOM - GROUND FLOOR

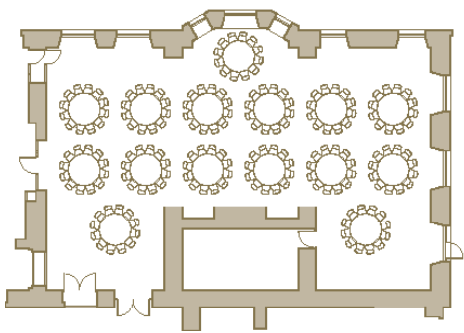


*Featuring beautiful wood paneling and other distinctive architectural elements.
Located close to the Marble Ballroom.*

CLASSROOM
Capacity: 90



LUNCH / DINNER
Capacity: 180 Rounds of 12

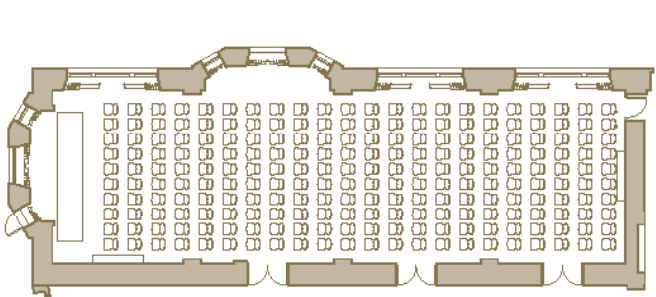


EMPIRE ROOM - GROUND FLOOR

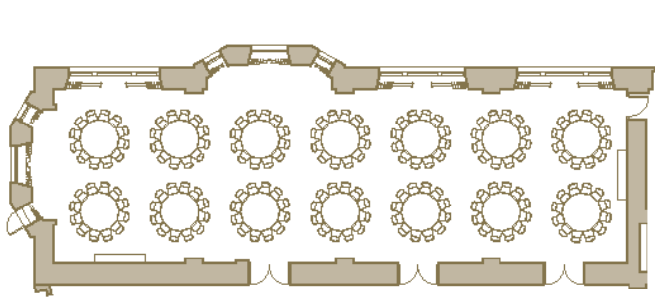


*A charming room with north and west facing floor length windows and high ceilings.
Located next to the Grand Ballroom.*

THEATRE
Capacity: 180



LUNCH / DINNER
Capacity: 168 Rounds of 12



TOWER SUITE - 5TH FLOOR



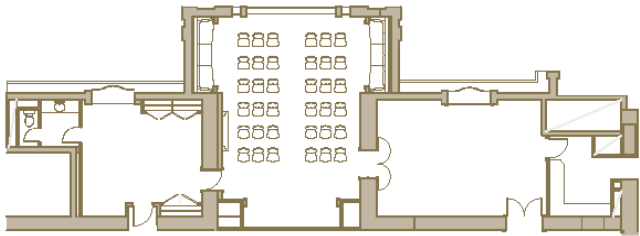
Take in the breathtaking view of the atrium from the large floor-to-ceiling windows, and the abundance of natural light from the glass ceiling feature, providing a view of the clock tower.

TOWER SUITE - 5TH FLOOR

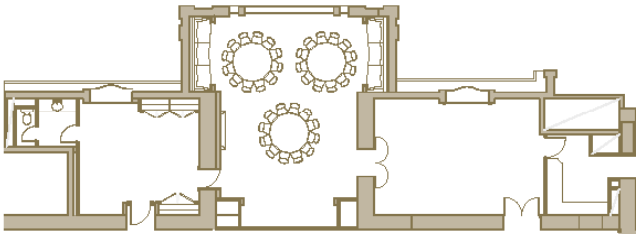


The Tower Suite comes with two additional rooms suitable for cloakroom area and drinks receptions.

THEATRE
Capacity: 36



LUNCH / DINNER
Capacity: 36 Rounds of 12



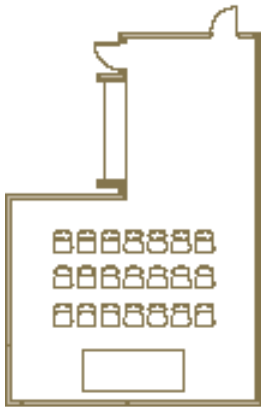


LANDMARK ROOMS & INTERVIEW SUITE

Ideal for small meetings, private dining and interviews. Landmark 2 & 3 are interconnecting.

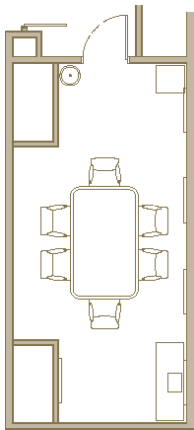
Landmark 1

THEATRE
Capacity: 21



Interview Suite

BOARDROOM
Capacity: 6



Landmark 2

THEATRE
Capacity: 36



Landmark 2

CLASSROOM
Capacity: 21



Landmark 3

THEATRE
Capacity: 36



Landmark 3

CLASSROOM
Capacity: 21



RESTAURANTS & BARS

Experience modern European dining in this enchanting setting under a magnificent glass roofed atrium. Available for small group dining in semi-private area up to 16 people.



RESTAURANTS & BARS

*Tucked away under a botanic horizon, uncover the bustling Champagne Bar in our oasis of luxury.
Available for private hire up to 250 people standing for drinks and canapés.*



RESTAURANTS & BARS

*Great Central Pub by Matt Fletcher, a British gastro pub in the heart of Marylebone.
Available to private hire up to 100 people and entertainment can be arranged.*



RESTAURANTS & BARS

Revel in the glamorous ambiance of a secret London hideaway.



WEDDINGS

A leading London venue with grand and elegant spaces for all types and sizes of weddings.



ROOMS & SUITES

Retreat from the vibrant city and relax in the peaceful luxury of one of our spacious rooms and suites.



SUPERIOR ROOM - 32sqm



EXECUTIVE FAMILY ROOM - 55sqm



LANDMARK SUITE - 110sqm



PRESIDENTIAL SUITE - 160sqm



LANDMARK SIGNATURE SUITE - 110 sqm



GET IN TOUCH

The hotel is situated directly opposite and connected to Marylebone Station at:

The Landmark London
222 Marylebone Road
London
NW1 6JQ

Tel: +44 (0) 20 7631 8000
Fax: +44 (0) 20 7631 8080
Email: event.sales@thelandmark.co.uk

www.landmarklondon.co.uk





THE LANDMARK LONDON

222 Marylebone Road, London, NW1 6JQ

Tel: +44 (0) 20 7631 8000 Email: event.sales@thelandmark.co.uk

www.landmarklondon.co.uk