



MEETINGS & EVENTS



AN OASIS OF LUXURY

in the Heart of London

Beautiful banqueting suites and majestic ballrooms have made the hotel a coveted venue for impressive events, spectacular gatherings and breath-taking weddings up to 650 people. The Landmark London is the perfect venue with its 11 meeting and event spaces over 22,000 square feet (2,100 square metres).





CONTENTS

ROOM CAPACITIES	04
ROOM DIMENSIONS	05
GRAND BALLROOM	06
GRAND BALLROOM I	08
GRAND BALLROOM II	09
MARBLE BALLROOM	10
CHAMPAGNE ROOM	11
DRAWING ROOM	12
EMPIRE ROOM	13
TOWER SUITE	14
LANDMARK ROOMS & INTERVIEW SUITE	17
RESTAURANTS & BARS	18
WEDDINGS	24
ROOMS & SUITES	26
SPA & WELLNESS	28
DIRECTIONS & LOCAL ATTRACTIONS	30
GET IN TOUCH	32

ROOM CAPACITIES

	REC. DRINKS	LUN/ DIN	DINNER & DANCE	SIT DOWN BUFFET	STAND BUFFET	DRINKS & DINNER		THEATRE	CLASSROOM	CABARET	BOARDROOM	U SHAPE
						<i>no dance floor</i>	<i>dance floor</i>	<i>BP</i>	<i>BP/slims</i>	<i>BP</i>	<i>FP</i>	<i>FP</i>
Grand Ballroom	650	504	432	396	500	252	216	512	266/ 336	264	N/A	N/A
Grand Ballroom I	300	240	180	180	250	120	74	210	105/ 119	112	42	50
Grand Ballroom II	300	240	180	180	250	120	74	210	105/ 119	112	42	50
Marble Ballroom	500	408	348	324	400	204	144	300	176/ 190	160	N/A	N/A
Champagne Room	70	36	N/A	36	40	24	N/A	70	30	24	24	20
Drawing Room	300	180	132	132	200	96	72	120	70/90	72	40	30
Empire Room	250	168	120	120	180	84	60	180	100/ 120	88	40	40
Tower Suite	70	36	N/A	36	40	36	N/A	36	21	24	25	20
Landmark I	15	10	N/A	12	12 WL	12 oval	N/A	21	N/A	N/A	10	N/A
Landmark II	40	36	N/A	24	30 WL	24	N/A	36	21	24	20	18
Landmark III	40	36	N/A	24	30	24	N/A	36	21	24	20	18
Landmark II & III	80	72	N/A	60	75	50	N/A	70	42	42	42	36

ROOM DIMENSIONS

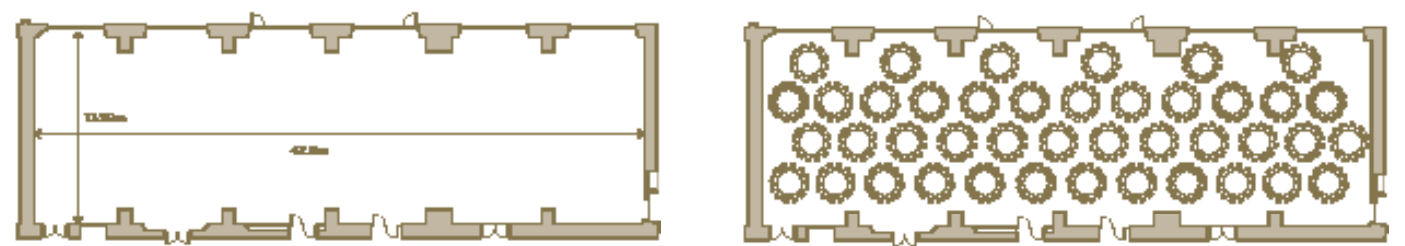
	Width		Length		Chandelier Height		Max Height		Areas	
ROOMS	Metres	Feet	Metres	Feet	Metres	Feet	Metres	Feet	Metres	Feet
GRAND BALLROOM	13.59	44'6	42.90	144'	4.00	13'2"	5.49	18'	610	6565
MARBLE BALLROOM	13.50	44'5"	35.77	117'3	3.32	10'11"	6.25	20'6"	478	5145
MARBLE HALL	7	23'0"	29	95'14"	-	-	2.71	8'10"	201	2163
DRAWING ROOM	12.86	42'2"	21.44	70'4"	3.7	12'1"	6.35	20'	254	2734
GRAND BALLROOM I	13.59	44'6"	21.81	71'6"	4	13'2"	5.49	18'	318	3422
GRAND BALLROOM II	13.59	44'6"	21.10	69'3"	4	13'2"	5.49	18'	292	3143
EMPIRE ROOM	7.82	25'7"	26.05	85'5"	3.6	11'10"	6.23	20'5"	222	2389
TOWER SUITE	6.59	21'7"	12.9	23'7"	-	-	9.11	29'11"	57	613
CHAMPAGNE ROOM	7.81	25'7"	10.06	33'	2.66	8'6"	3.86	12'7"	81	871
LANDMARK 1	5.43	17'9"	10.93	35'10"	-	-	2.38	7'10"	49	527
LANDMARK 2	6.95	22'10"	8.23	27'	-	-	2.38	7'10"	54	581
LANDMARK 3	6.95	22'10"	7.92	26	-	-	2.38	7'10"	57	613
LANDMARK 2 & 3	6.95	22'10"	16.15	53	-	-	2.38	7'10"	111	1194
INTERVIEW SUITE	2.5	8.2	6.9	22.64	-	-	2.38	7'10"	16	172

GRAND BALLROOM - GROUND FLOOR



This beautiful room provides an extensive area with high ceilings and natural lighting for large catering events and wedding receptions. The room can be divided into two separate rooms - Grand Ballroom I & II

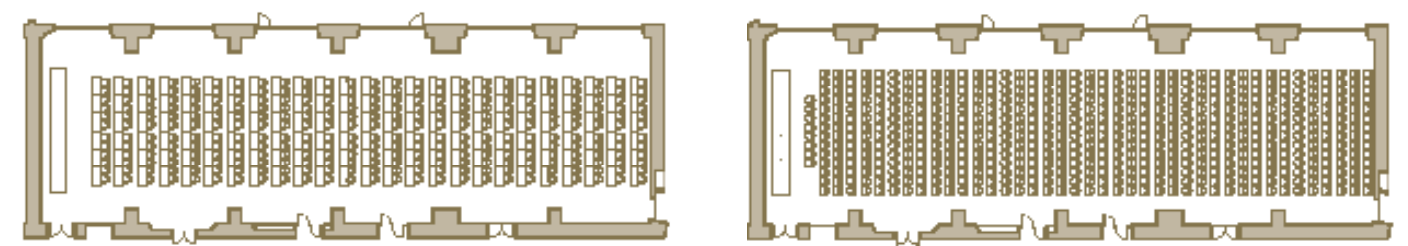
DIMENSIONS	DINNER / DANCE
	Capacity: 432 Rounds of 12



GRAND BALLROOM - GROUND FLOOR



CLASSROOM	THEATRE
Capacity: 336	Capacity: 512

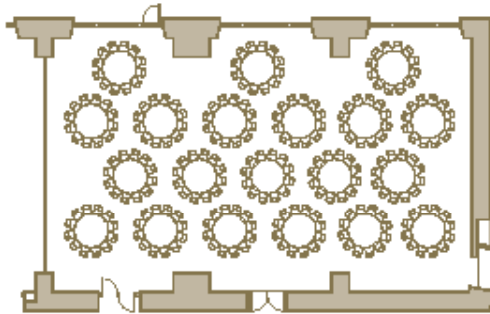


GRAND BALLROOM I

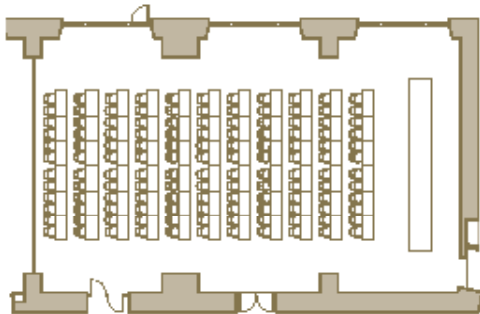


Medium-sized function rooms of distinctive identity and charm with beautiful chandeliers and high ceilings.

LUNCH / DINNER
Capacity: 240 Rounds of 12



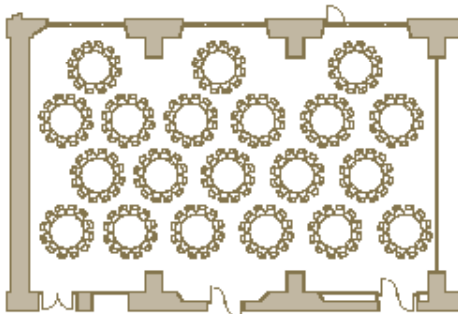
CLASSROOM
Capacity: 119



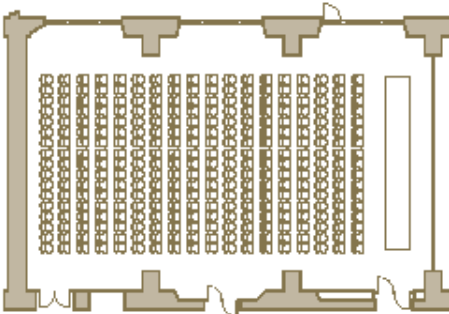
GRAND BALLROOM II



LUNCH / DINNER
Capacity: 240 Rounds of 12



THEATRE
Capacity: 210

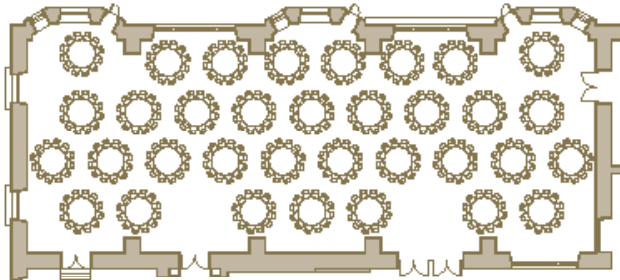


MARBLE BALLROOM - GROUND FLOOR

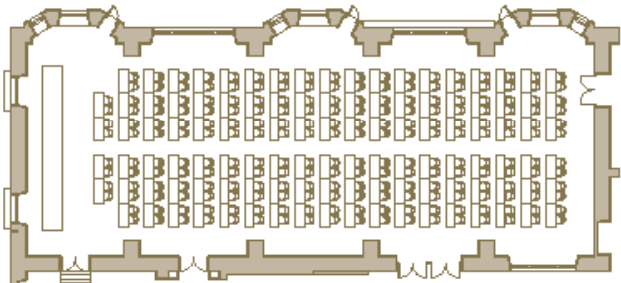


Ideal venue for large gatherings and drink receptions and it is interconnected with the Champagne Room.

DINNER / DANCE
Capacity: 408 Rounds of 12



CLASSROOM
Capacity: 190



MARBLE BALLROOM - GROUND FLOOR



CHAMPAGNE ROOM
GROUND FLOOR

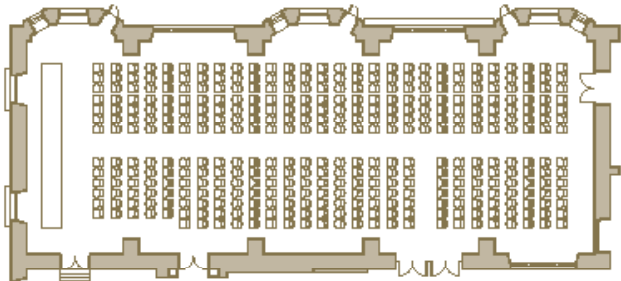
Can be used as a green room, storage room or event team room.

DRINKS RECEPTION
Capacity: 70

THEATRE PLAN
Capacity: 70

LUNCH / DINNER
Capacity: 36

THEATRE PLAN
Capacity: 300

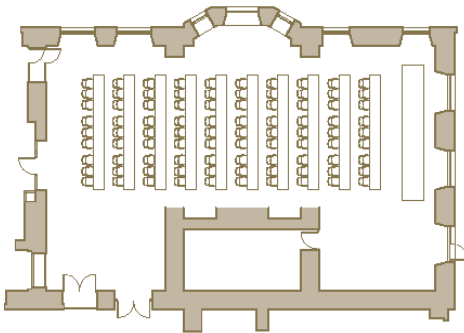


DRAWING ROOM - GROUND FLOOR

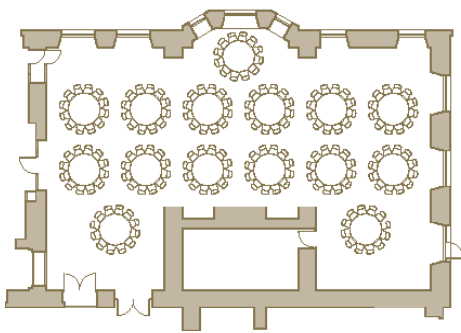


*Featuring beautiful wood paneling and other distinctive architectural elements.
Located close to the Marble Ballroom.*

CLASSROOM
Capacity: 90



LUNCH / DINNER
Capacity: 180 Rounds of 12

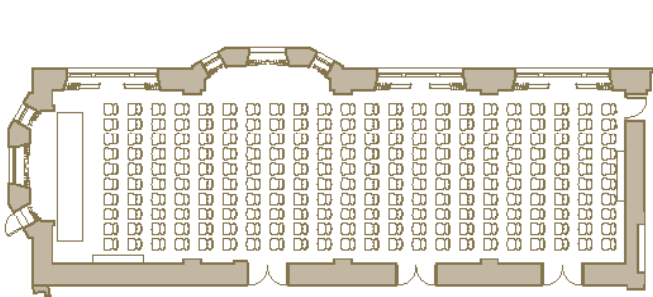


EMPIRE ROOM - GROUND FLOOR

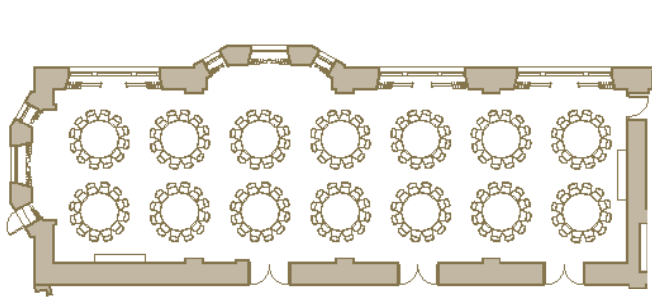


*A charming room with north and west facing floor length windows and high ceilings.
Located next to the Grand Ballroom.*

THEATRE
Capacity: 180



LUNCH / DINNER
Capacity: 168 Rounds of 12



TOWER SUITE - 5TH FLOOR



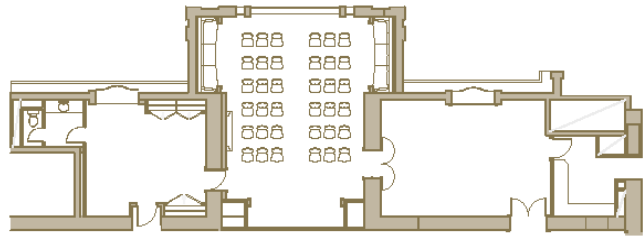
Take in the breathtaking view of the atrium from the large floor-to-ceiling windows, and the abundance of natural light from the glass ceiling feature, providing a view of the clock tower.

TOWER SUITE - 5TH FLOOR

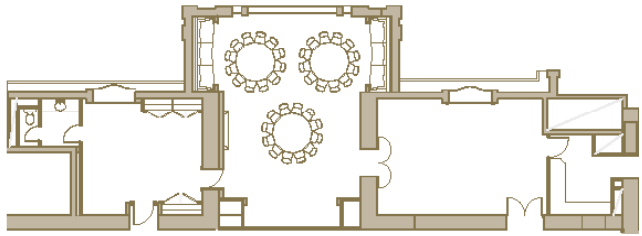


The Tower Suite comes with two additional rooms suitable for cloakroom area and drinks receptions.

THEATRE
Capacity: 36



LUNCH / DINNER
Capacity: 36 Rounds of 12



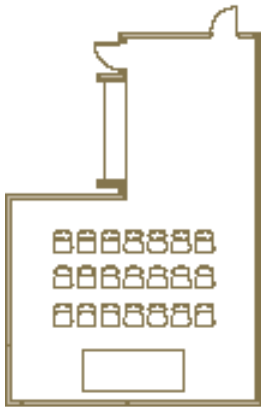


LANDMARK ROOMS & INTERVIEW SUITE

Ideal for small meetings, private dining and interviews. Landmark 2 & 3 are interconnecting.

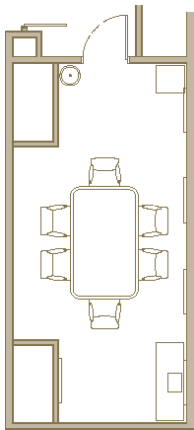
Landmark 1

THEATRE
Capacity: 21



Interview Suite

BOARDROOM
Capacity: 6



Landmark 2

THEATRE
Capacity: 36



Landmark 2

CLASSROOM
Capacity: 21



Landmark 3

THEATRE
Capacity: 36



Landmark 3

CLASSROOM
Capacity: 21



RESTAURANTS & BARS

Experience modern European dining in this enchanting setting under a magnificent glass roofed atrium. Available for small group dining in semi-private area up to 16 people.



RESTAURANTS & BARS

*Great Central Pub by Matt Fletcher, a British gastro pub in the heart of Marylebone.
Available to private hire up to 100 people and entertainment can be arranged.*



RESTAURANTS & BARS

Revel in the glamorous ambiance of a secret London hideaway.



WEDDINGS

A leading London venue with grand and elegant spaces for all types and sizes of weddings.



ROOMS & SUITES

Retreat from the vibrant city and relax in the peaceful luxury of one of our spacious rooms and suites.



SUPERIOR ROOM - 32sqm



EXECUTIVE FAMILY ROOM - 55sqm



LANDMARK SUITE - 110sqm



PRESIDENTIAL SUITE - 160sqm



LANDMARK SIGNATURE SUITE - 110 sqm

SPA & WELLNESS

Escape to a blissful place and discover a secret hideaway in the heart of London.



DIRECTIONS & LOCAL ATTRACTIONS

The Landmark London

222 Marylebone Road, London, NW1 6JQ

Travelling From

WEST	M40 to Marylebone Road
EAST	M25 to M40, to Marylebone Road
NORTH	M1 to Edgware Road, turn left on to Marylebone Road
SOUTH	M25 to M40, to Marylebone Road

Directions From Heathrow Airport

Heathrow Airport is situated 14 miles west of London.

By Car

Take the M4 (which leads on to the A4) to the M25. Continue until the A40 (M40) and then turn right into Marylebone Road.

By Rail

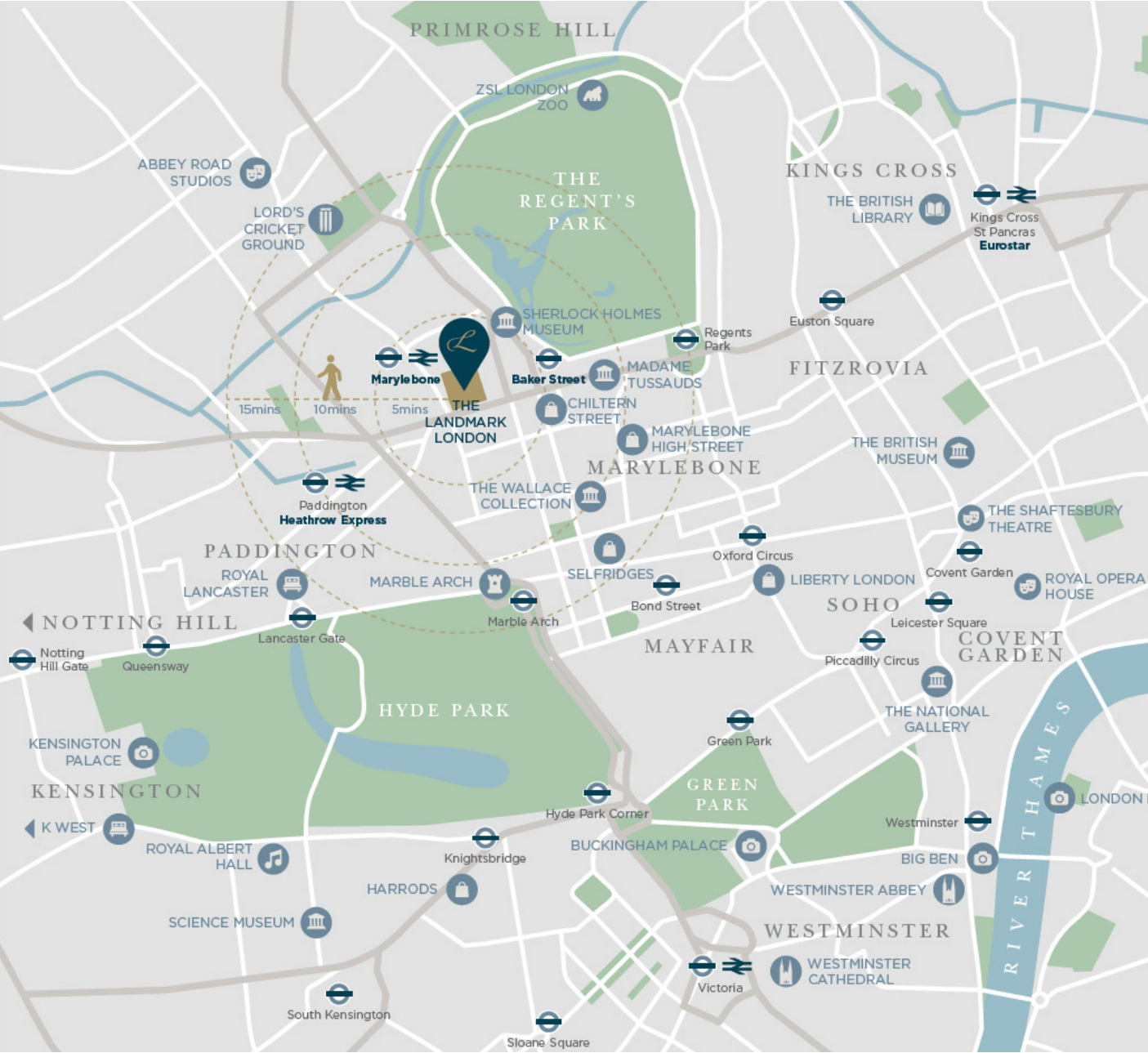
Using Heathrow Express takes 15 minutes to Paddington Station. From Paddington Station, The Landmark is 5 minutes by taxi, or two stops by tube to Marylebone Station.

Directions From Gatwick Airport

Thameslink trains run from Gatwick to Kings Cross Thameslink station, Kings Cross Thameslink Station is a 15-minute taxi ride from The Landmark London. Alternatively, the Gatwick Express terminates at Victoria Station, which is 15-minute taxi ride from The Landmark London.

NB: The Landmark London is located on Marylebone Road, at the border of London's Congestion Charge region. If travelling by car, pass by central London in order to avoid this charge.

Madame Tussauds		www.madame-tussauds.co.uk	
 9 mins	 5 mins	 Baker Street	
Marylebone High Street		www.marylebonevillage.com	
 13 mins	 6 mins	 Marlylebone	
Wallace Collection		www.wallacecollection.org	
 14 mins	 7 mins	 Baker Street	
Regents Park Open Air Theatre		www.openairtheatre.com	
 15 mins	 8 mins	 Regent's Park	
Selfridges		www.selfridges.com	
 18 mins	 8 mins	 Bond Street	
Bond Street Shopping		www.bondstreet.co.uk	
 21 mins	 9 mins	 Bond Street	
Lords Cricket Ground		www.lords.org	
 23 mins	 5 mins	 St John's Wood	
Oxford Street & Regent Street		www.oxfordstreet.co.uk	
 25 mins	 11 mins	 Oxford Circus	
London Zoo		www.zsl.org	
 30 mins	 7 mins	 Camden Town	
Camden Market		www.camdenmarket.com	
 39 mins	 13 mins	 Camden Town	



GET IN TOUCH

The hotel is situated directly opposite and connected to Marylebone Station at:

The Landmark London
222 Marylebone Road
London
NW1 6JQ

Tel: +44 (0) 20 7631 8000
Fax: +44 (0) 20 7631 8080
Email: event.sales@thelandmark.co.uk

www.landmarklondon.co.uk





THE LANDMARK LONDON

222 Marylebone Road, London, NW1 6JQ

Tel: +44 (0) 20 7631 8000 Email: event.sales@thelandmark.co.uk

www.landmarklondon.co.uk