



AN OASIS OF LUXURY
in the Heart of London



*Experience quintessential London
charm in the sumptuous surroundings
of this magnificent grande dame hotel.*

HOTEL	04
ROOMS	05
SUITES	07
PRESIDENTIAL SUITE	09
WINTER GARDEN RESTAURANT	11
HIGH PALMS HIGH TEA	13
CHAMPAGNE BAR	15
GREAT CENTRAL PUB	17
THE MIRROR BAR	19
MEETINGS & EVENTS	21
THE SPA	23
DISCOVER THE HISTORY	25
LOCATION	27
CONTACT & SISTER HOTELS	29

THE LANDMARK LONDON



The Landmark London, an oasis of luxury, at the heart of the capital, a magnificent historic hotel combining modern amenities with classic style.

Spacious and elegant rooms and suites provide sumptuous comfort, peace and privacy along with contemporary amenities. Personable world class service ensures that every guest experiences an exceptional stay in our oasis of luxury.

Beautiful banqueting suites and majestic ballrooms have made the hotel a coveted venue for impressive events, spectacular gatherings and breath-taking weddings.

Charming settings to dine and unwind include the iconic Winter Garden Restaurant, the glamorous Champagne Bar, the contemporary Great Central Pub and the sophisticated Mirror Bar.

Our tranquil Spa and health club features an array of facilities including a chlorine free 15-metre swimming pool, Jacuzzi, steam room, private gym and sensuous treatment rooms.



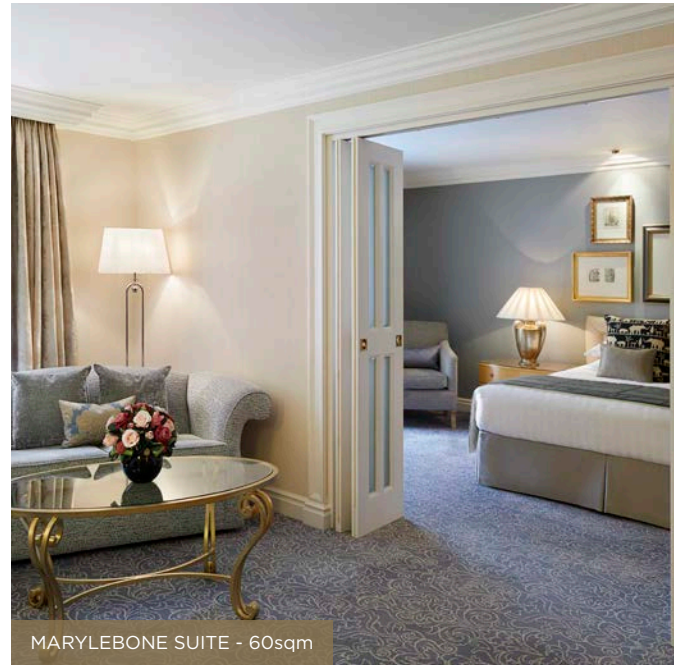


ROOMS

Retreat from the vibrant city and relax in the peaceful luxury of one of our spacious rooms.

The elegant rooms at The Landmark London are renowned for their space and sophistication. Authentic classic style combines sumptuous comfort and all the modern amenities one could wish for. Each room has been impeccably designed providing unrivalled luxury, peace and privacy, ensuring that your stay is simply delightful.





SUITES

Indulge in the luxury of our spacious suites where classic style combines with contemporary flair.

Each one of our grand and decadent suites offer a unique and captivating ambience, perfect for that truly glamorous London stay.





LANDMARK SIGNATURE SUITE

The Landmark Signature Suites are a harmonious blend of luxury, heritage, and contemporary elegance.

The newly redesigned Landmark Signature Suites are the perfect home away from home. Equipped with luxurious amenities, such as Miele kitchen appliances, vanity desk with a Dyson hairdryer and mood lighting throughout the suites. There is also an option to interconnect rooms, resulting in a spacious 3-bedroom suite spanning over 210 square meters.



LANDMARK SIGNATURE SUITE - 110sqm



PRESIDENTIAL SUITE - 160sqm



PRESIDENTIAL SUITE

Experience the ultimate in luxury in one of London's most coveted suites.

A glamorous and expansive lounge, a distinguished dining room and a decadent bedroom are complemented with state-of-the-art amenities, including a fully equipped kitchenette and a chic dressing room. The spacious and pristine white Italian marble bathroom with a Jacuzzi, a double-bath and a large walk in shower.



WINTER GARDEN

RESTAURANT



Experience modern European dining all year round in this enchanting setting under a magnificent glass roofed atrium.

Indulge in a lavish breakfast, a leisurely lunch, a glamorous dinner or a quintessential afternoon tea beneath the elegant palms of our renowned Winter Garden Restaurant.

Simply delicious culinary compositions, world class cuisine at its most endearing. The Winter Garden Restaurant is one of the best restaurants in London and has been awarded 2 AA Rosettes.



HIGH PALMS HIGH TEA

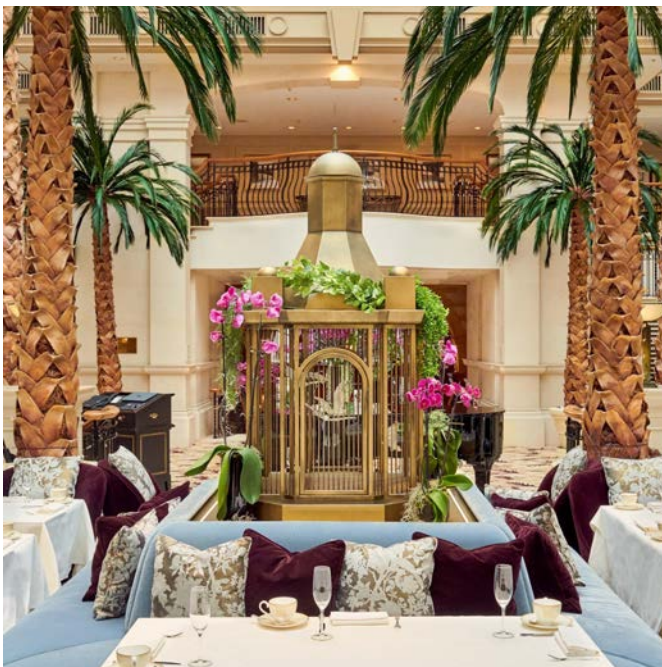
HIGH PALMS HIGH TEA

IN THE WINTER GARDEN

*London's most exquisite Afternoon Tea
served beneath the elegant high palms of
our famous atrium.*

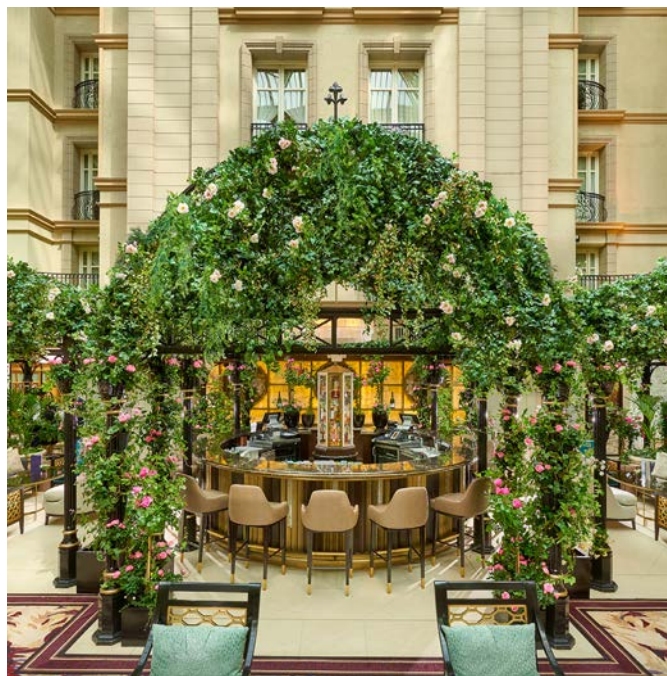
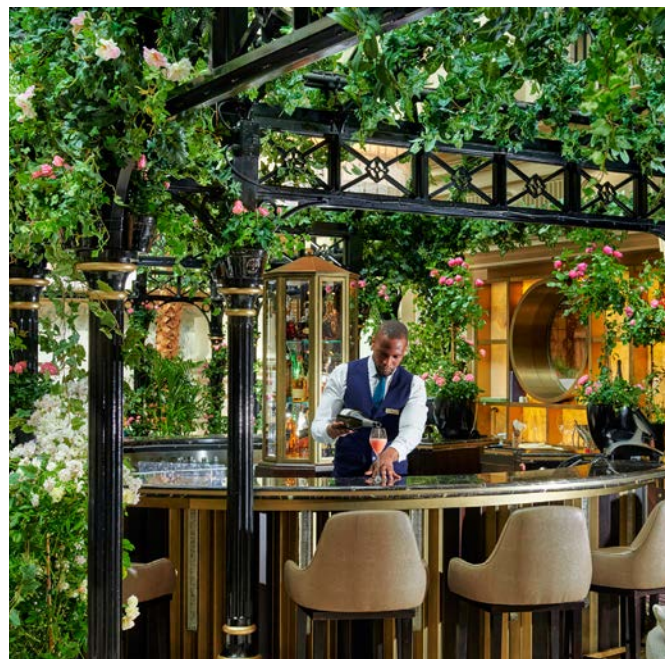
Indulge in an irresistible assortment of
sandwiches, scones, and sweet delicacies.

Our award-winning Afternoon Tea in the
most enchanting setting is the perfect way to
experience true English charm.





CHAMPAGNE BAR



*Tucked away under a botanic horizon,
uncover the bustling Champagne Bar in
our oasis of luxury.*

The perfect setting for tea, coffee and light bites
or even a glass of Champagne.

Unwind to the sound of our Jazz trio every Friday
and Saturday evening whilst sipping on your
favourite glass of Champagne.



GREAT CENTRAL

PUB
BY MATT FLETCHER



Welcome to Great Central Pub by Matt Fletcher, a British gastro pub in the heart of Marylebone.

Serving old pub classics with a modern twist in a warming ambience. Chef Patron Matt Fletcher takes seasonal ingredients on a culinary journey, turning fresh produce from our local suppliers into hearty signature British dishes.





THE MIRROR BAR



Revel in the glamorous ambiance of a secret London hideaway.

The Mirror Bar is one of Marylebone's best-kept secrets. Perfect for pre-dinner cocktails or late-night drinks, the discreet charisma of this authentic and atmospheric venue is beyond captivating and simply seductive.

Why not also sip alfresco on the terrace and select from the handpicked range of cigars.





MEETINGS & EVENTS

A leading London venue with grand and elegant spaces for all types and sizes of gatherings and events.

Beautiful banqueting suites and majestic ballrooms have made the hotel a coveted venue for impressive events, spectacular gatherings and breath-taking weddings up to 4000 people. The Landmark London is the perfect venue with its 11 meeting and event spaces over 22,000 square feet (2,100 square metres).



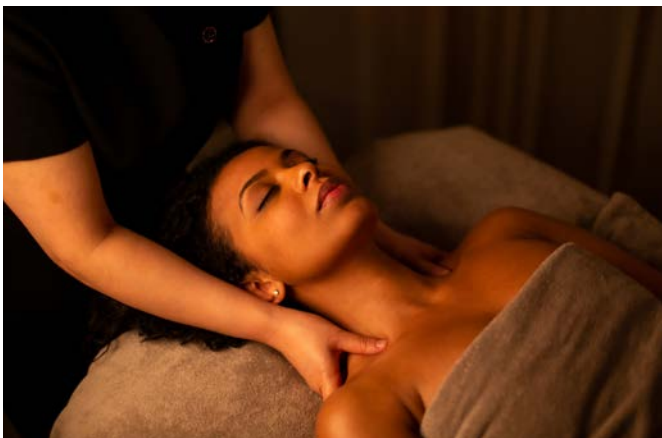


THE SPA

AT THE LANDMARK LONDON

Escape to a blissful place and discover a secret hideaway in the heart of London.

Our tranquil Spa and health club features an array of facilities including a chlorine free 15-metre chlorine-free swimming pool, Jacuzzi, steam room, private gym and sensuous treatment rooms.





DISCOVER THE HISTORY

1894	Sir Edward Watkin, visionary entrepreneur and Chairman of the Great Central Railway dreamt of building the last great Victorian hotel coincide with the opening of Great Central Station, now Marylebone Station.
1895	Sir John Blundell Maple, Chairman of Maple Furnishers bought the site for 4 1/2 Pence per square foot and began construction of the hotel.
1897	Colonel Sir Robert Edis, the architect, designed a building with 700 bedrooms and a cycle track on the roof.
1899	The hotel opens as Great Central Hotel on 1st July surpassing all previous hotels in opulence and luxury.
1914	During World War I the building is requested by The Government, to be used as convalescent homes for officers returning from the war front.
1918	The building is returned to its former use as a hotel.
1939	During World War II the building is again requisitioned by The Government, to be used by British military Intelligence and as an air raid shelter.
1945	The building is bought by the British Railways Board, nicknamed 'The Kremlin' by its employees.
1988	Kentaro Abe, a Japanese pop star, bought the building and began a major restoration to create a very special London hotel
1993	The new hotel opens as The Regent London, part of The Four Seasons Hotel Group.
1995	The hotel is purchased by The Lancaster Landmark Hotel Company owned by Khun Jatuporn Sihanatkathakul, a prominent Thai businessman and hotelier. It is renamed The Landmark London and remains part of the Lancaster Landmark Hotel Group.



DIRECTIONS & LOCAL ATTRACTIONS

The Landmark London

222 Marylebone Road, London, NW1 6JQ

Travelling From

- WEST M40 to Marylebone Road
EAST M25 to M40, to Marylebone Road
NORTH M1 to Edgware Road, turn left on to Marylebone Road
SOUTH M25 to M40, to Marylebone Road

Directions From Heathrow Airport

Heathrow Airport is situated 14 miles west of London.

By Car

Take the M4 (which leads on to the A4) to the M25. Continue until the A40 (M40) and then turn right into Marylebone Road.

By Rail

Using Heathrow Express takes 15 minutes to Paddington Station. From Paddington Station, The Landmark is 5 minutes by taxi, or two stops by tube to Marylebone Station.

Directions From Gatwick Airport

Thameslink trains run from Gatwick to Kings Cross Thameslink station, Kings Cross Thameslink Station is a 15-minute taxi ride from The Landmark London. Alternatively, the Gatwick Express terminates at Victoria Station, which is 15-minute taxi ride from The Landmark London.

NB: The Landmark London is located on Marylebone Road, at the border of London's Congestion Charge region. If travelling by car, pass by central London in order to avoid this charge.

Madame Tussauds www.madame-tussauds.co.uk

 9 mins  5 mins  Baker Street

Marylebone High Street www.marylebonevillage.com

 13 mins  6 mins  Marlylebone

Wallace Collection www.wallacecollection.org

 14 mins  7 mins  Baker Street

Regents Park Open Air Theatre www.openairtheatre.com

 15 mins  8 mins  Regent's Park

Selfridges www.selfridges.com

 18 mins  8 mins  Bond Street

Bond Street Shopping www.bondstreet.co.uk

 21 mins  9 mins  Bond Street

Lords Cricket Ground www.lords.org

 23 mins  5 mins  St John's Wood

Oxford Street & Regent Street www.oxfordstreet.co.uk

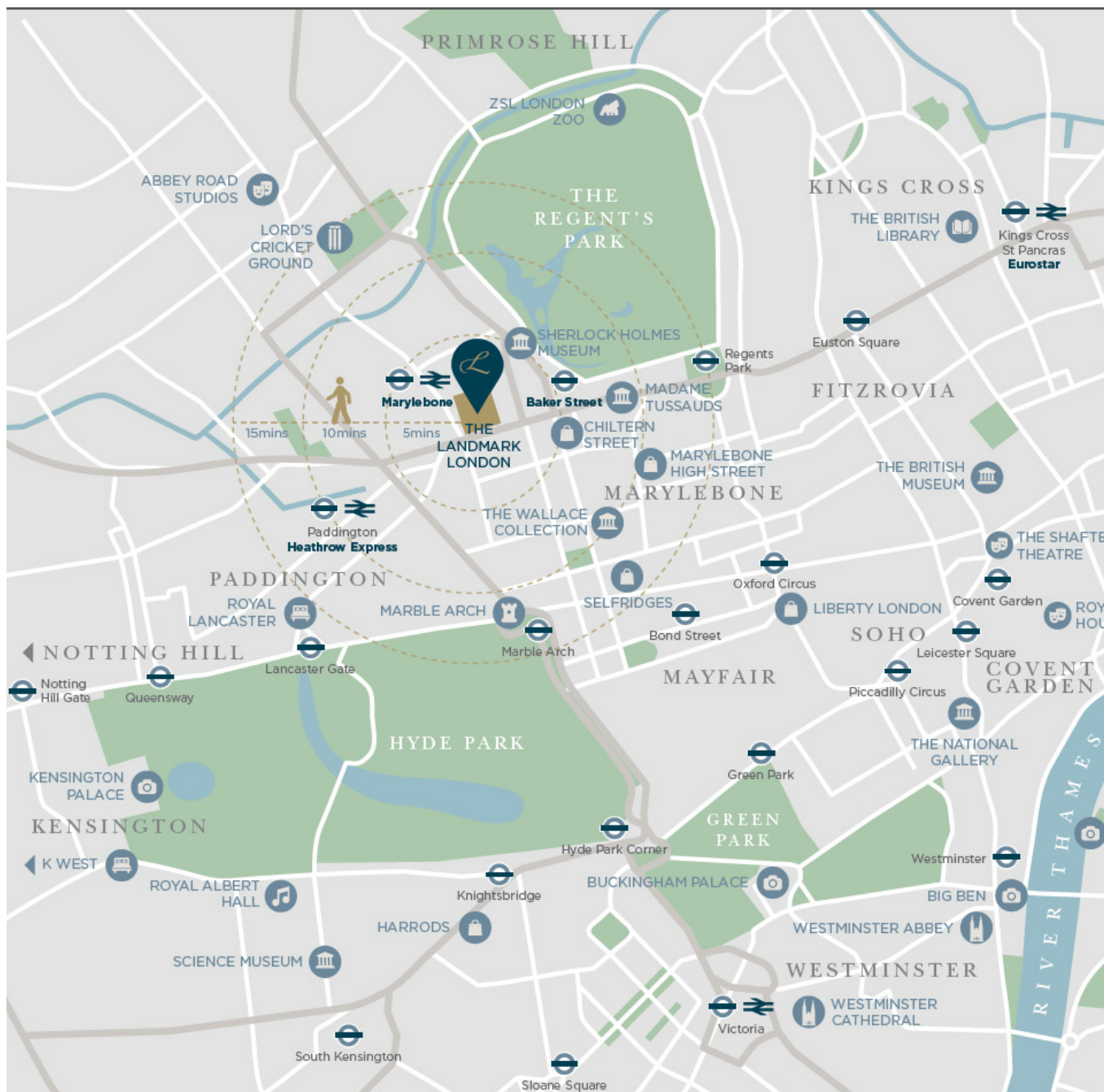
 25 mins  11 mins  Oxford Circus

London Zoo www.zsl.org

 30 mins  7 mins  Camden Town

Camden Market www.camdenmarket.com

 39 mins  13 mins  Camden Town



GET IN TOUCH

THE LANDMARK LONDON



222 Marylebone Road, London, NW1 6JQ
T: +44 (0) 20 7631 8000
E: reservations@thelandmark.co.uk
www.landmarklondon.co.uk

OUR SISTER HOTELS

BASIL ST APARTMENTS



Basil Street, London, SW3 1AX
T: +44 (0) 20 7123 6309
E: book@15basilstreet.com
www.basilstreetapartments.com

OUR SISTER HOTELS

K WEST HOTEL & SPA



Richmond Way, London, W14 0AX
T: +44 (0) 20 8008 6600
E: bookit@k-west.co.uk
www.k-west.co.uk

ROYAL LANCASTER LONDON



Lancaster Terrace, London, W2 2TY
T: +44 (0) 20 7551 6000
E: book@royallancaster.com
www.royallancaster.com





THE LANDMARK LONDON

222 Marylebone Road, London, NW1 6JQ

Tel: +44 (0) 20 7631 8000 Email: reservations@thelandmark.co.uk

www.landmarklondon.co.uk