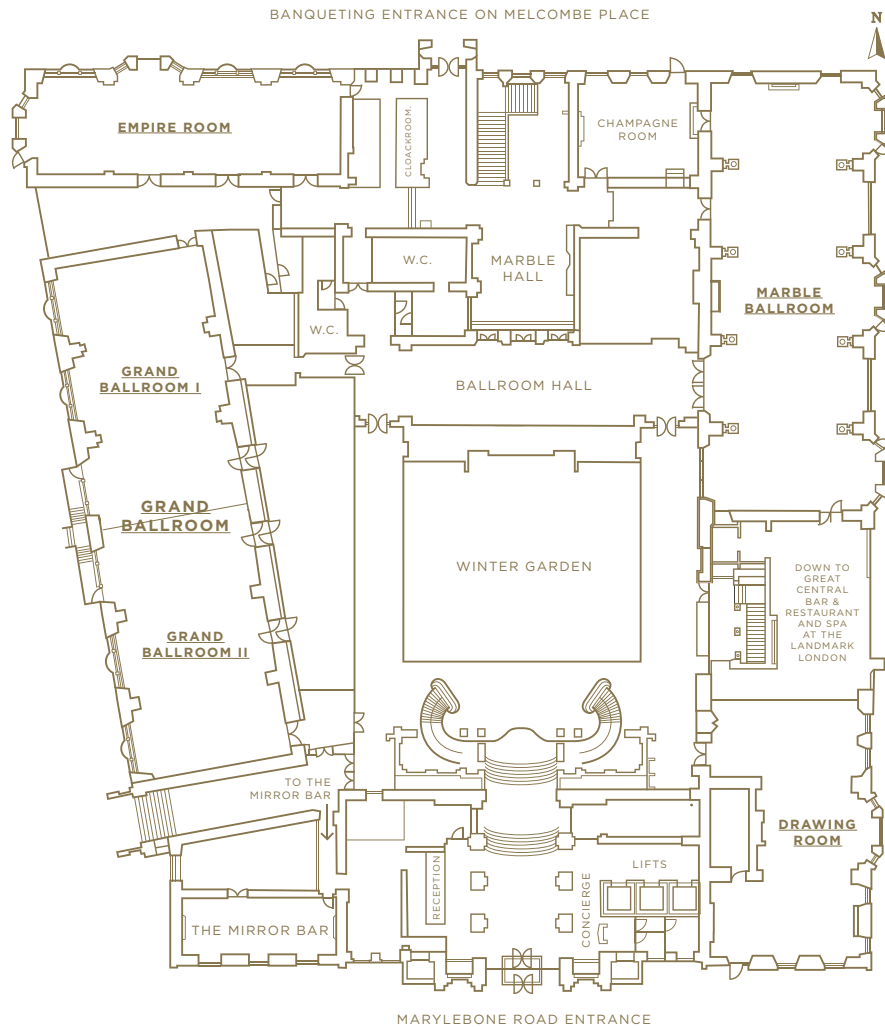
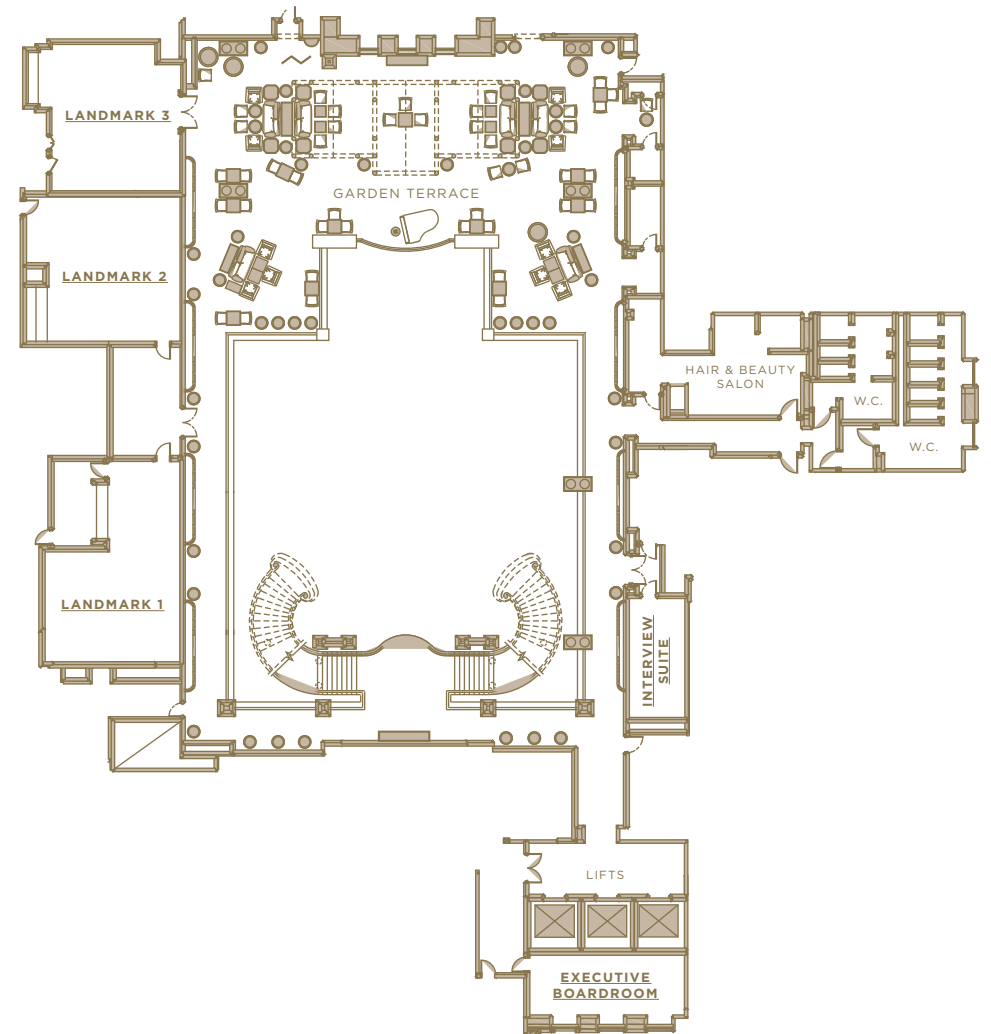


## GROUND FLOORPLAN



## MEZZANINE FLOORPLAN



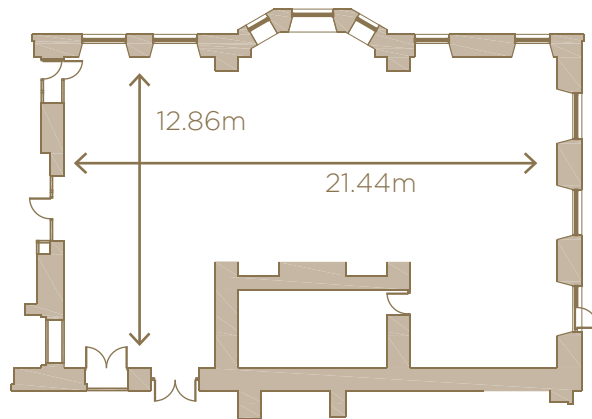
*Click on each Event Room name to read more about the room features and layout possibilities*

## ROOM CAPACITIES

*Click on each Event Room name  
to read more about the room features  
and layout possibilities*

	Reception Drinks	Lunch / Dinner	Dinner Dance	Sit Down Buffet	Theatre		Classroom		Cabaret		Boardroom		U-Shape	
ROOMS					FP	BP	FP/SLIMS	BP/SLIMS	FP	BP	FP	BP	FP	
GRAND BALLROOM	750	504	432	396	568	512	301/364	266/336	228	264	-	-	-	-
MARBLE BALLROOM	500	408	348	324	380	300	224/244	176/190	192	160	50	40	-	-
CHAMPAGNE ROOM	70	36	-	24	70	-	30	-	24	-	24	-	20	-
DRAWING ROOM	300	180	132	132	200	120	90/110	70-90	112	72	40	22	30	20
GRAND BALLROOM I	350	240	180	180	306	210	133/147	105/119	136	112	42	40	50	30
GRAND BALLROOM II	350	240	180	180	306	210	133/147	105/119	136	112	42	40	50	30
EMPIRE ROOM	250	168	120	120	220	180	120/150	100/120	96	88	40	30	40	30
TOWER SUITE	60	36	-	36	36	-	21	-	24	-	25	-	25	30
GARDEN TERRACE	350	120	-	108	-	-	-	-	-	-	-	-	-	-
LANDMARK 1	-	10	-	10	-	-	-	-	-	-	10	-	-	-
LANDMARK 2	-	20	-	20	36	-	21	-	32	-	16	-	18	-
LANDMARK 3	-	20	-	20	36	-	21	-	24	-	16	-	18	-
LANDMARK 2 & 3	-	72	-	60	70	-	42	-	42	-	42	-	46	-
INTERVIEW SUITE	-	-	-	-	-	-	-	-	-	-	6	-	-	-

## DRAWING ROOM



### ROOM CAPACITY

RECEPTION: 300

LUNCH / DINNER: 180

DINNER & DANCE: 132

SIT DOWN BUFFET: 132

THEATRE FP: 200

CLASSROOM FP: 110

CABARET FP: 112

BOARDROOM FP: 40

U-SHAPE FP: 30

### ROOM FEATURES

- Floor to ceiling windows, natural daylight
- High ceiling: 6.35m
- Dedicated kitchen
- Dedicated Events Manager
- Easy loading access from street
- Working fire place
- Original ornate architectural detail
- 63 AWP phase power



**FOR FURTHER INFORMATION PLEASE CONTACT OUR EVENT SALES TEAM:**

*event.sales@thelandmark.co.uk*

+44 (0)20 7631 8271

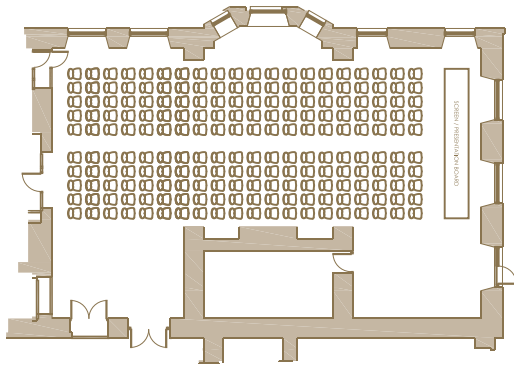
## DRAWING ROOM

---

### THEATRE LAYOUT

---

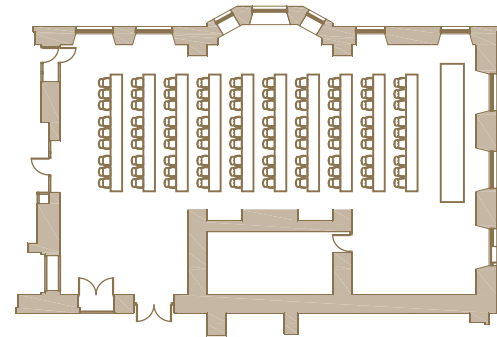
*Capacity: 200*



### CLASSROOM LAYOUT

---

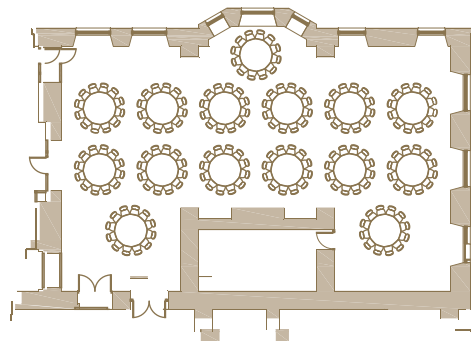
*Capacity: 110*



### LUNCH/DINNER LAYOUT

---

*Capacity: 180*



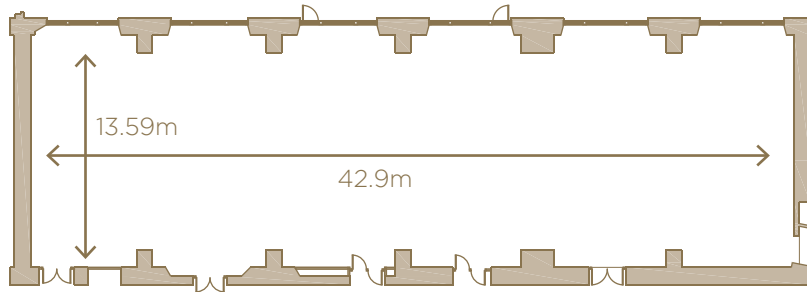
**FOR FURTHER INFORMATION PLEASE CONTACT OUR EVENT SALES TEAM:**

*event.sales@thelandmark.co.uk*

*+44 (0)20 7631 8271*



## GRAND BALLROOM



### ROOM CAPACITY

RECEPTION: 750

LUNCH / DINNER: 504

DINNER & DANCE: 432

SIT DOWN BUFFET: 396

THEATRE: 568

CLASSROOM: 364

CABARET: 264

BOARDROOM: N/A

U-SHAPE: N/A

### ROOM FEATURES

- Floor to ceiling windows, natural daylight
- High ceiling: 5.49m (maximum height); 4.00m (chandelier height)
- Dedicated kitchen
- Flexible room: can be divided into 2 sections
- Dedicated Events Manager
- Easy loading access from street
- Cloakroom and registration desk
- Group check-in location
- Space for 3 coaches for guest drop off
- Original ornate architectural detail
- 125 AWP and 63 AWP phase power



**FOR FURTHER INFORMATION PLEASE CONTACT OUR EVENT SALES TEAM:**

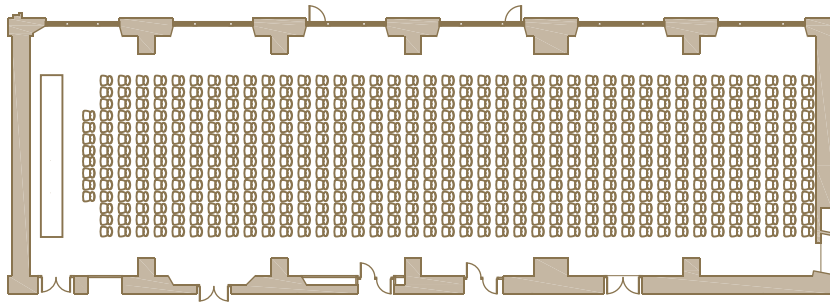
*event.sales@thelandmark.co.uk*

+44 (0)20 7631 8271

## GRAND BALLROOM

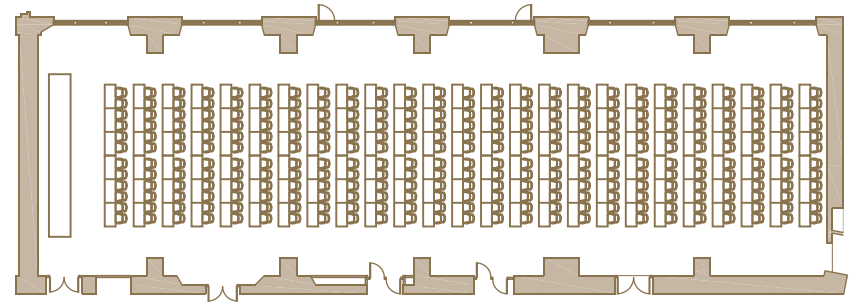
### THEATRE LAYOUT

*Capacity: 568*



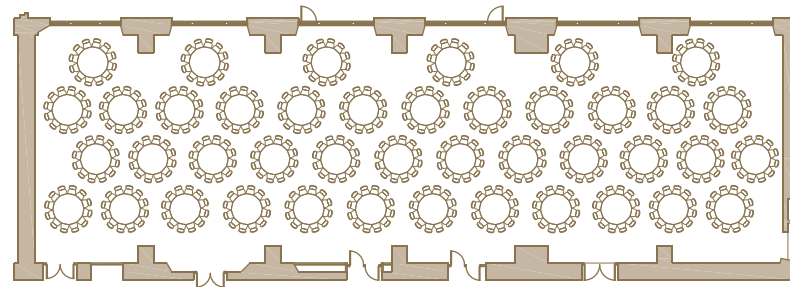
### CLASSROOM LAYOUT

*Capacity: 364*



### LUNCH/DINNER LAYOUT

*Capacity: 504*

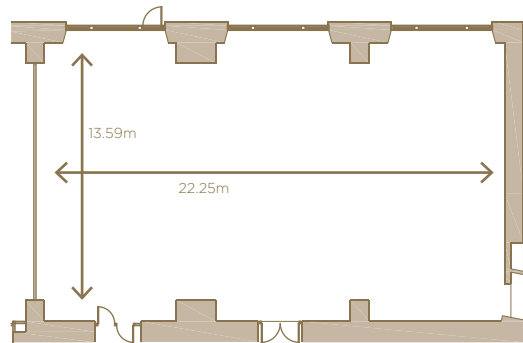


**FOR FURTHER INFORMATION PLEASE CONTACT OUR EVENT SALES TEAM:**

*event.sales@thelandmark.co.uk*

*+44 (0)20 7631 8271*

## GRAND BALLROOM |



### ROOM CAPACITY

RECEPTION: 350  
LUNCH / DINNER: 240  
DINNER & DANCE: 180  
SIT DOWN BUFFET: 180  
THEATRE: 306  
CLASSROOM: 133  
CABARET: 136  
BOARDROOM: 42  
U-SHAPE: 50

### ROOM FEATURES

- Floor to ceiling windows, natural daylight
- High ceiling: 5.49m (maximum height); 4.00m (chandelier height)
- Dedicated kitchen
- Dedicated Events Manager
- Easy loading access from street
- Cloakroom and registration desk
- Group check-in location
- Space for 3 coaches for guest drop off
- Original ornate architectural detail
- 125 AWP and 63 AWP phase power



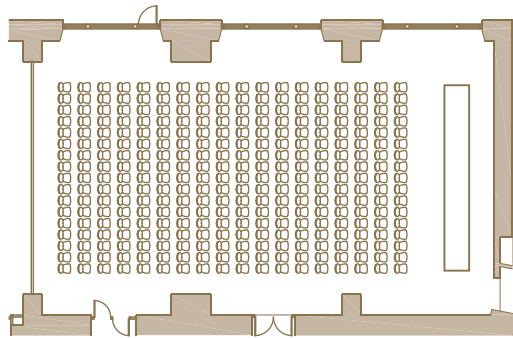
**FOR FURTHER INFORMATION PLEASE CONTACT OUR EVENT SALES TEAM:**

*event.sales@thelandmark.co.uk*  
**+44 (0)20 7631 8271**

## GRAND BALLROOM |

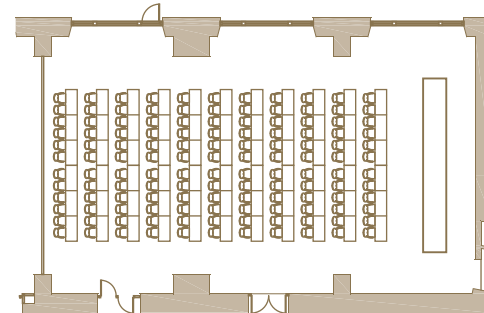
### THEATRE LAYOUT

*Capacity: 306*



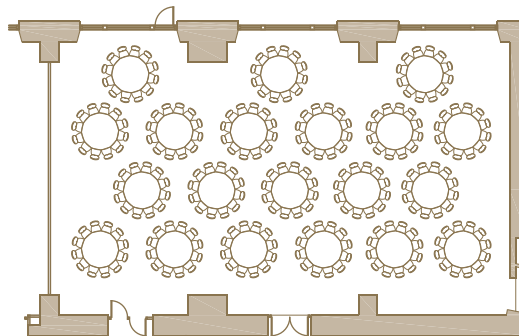
### CLASSROOM LAYOUT

*Capacity: 133*



### LUNCH/DINNER LAYOUT

*Capacity: 240*



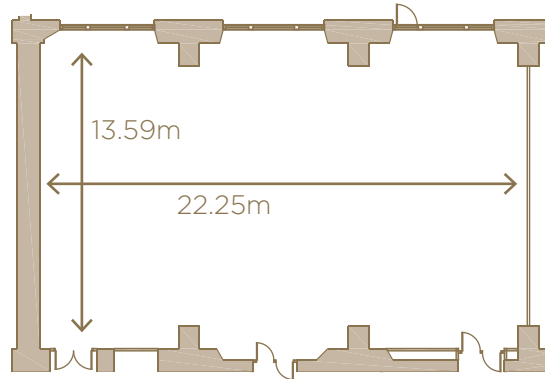
**FOR FURTHER INFORMATION PLEASE CONTACT OUR EVENT SALES TEAM:**

*event.sales@thelandmark.co.uk*

*+44 (0)20 7631 8271*



## GRAND BALLROOM II



### ROOM CAPACITY

RECEPTION: 350

LUNCH / DINNER: 240

DINNER & DANCE: 180

SIT DOWN BUFFET: 180

THEATRE: 306

CLASSROOM: 133

CABARET: 136

BOARDROOM: 42

U-SHAPE: 50

### ROOM FEATURES

- Floor to ceiling windows, natural daylight
- High ceiling: 5.49m (maximum height); 4.00m (chandelier height)
- Dedicated kitchen
- Dedicated Events Manager
- Easy loading access from street
- Cloakroom and registration desk
- Group check-in location
- Space for 3 coaches for guest drop off
- Original ornate architectural detail
- 63 AWP phase power



**FOR FURTHER INFORMATION PLEASE CONTACT OUR EVENT SALES TEAM:**

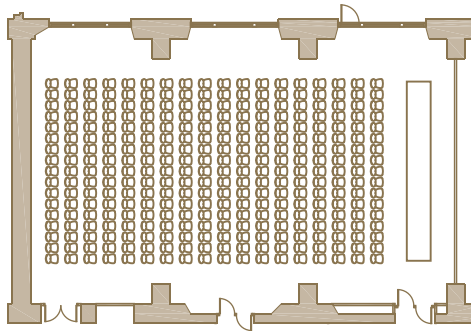
*event.sales@thelandmark.co.uk*  
*+44 (0)20 7631 8271*



## GRAND BALLROOM ||

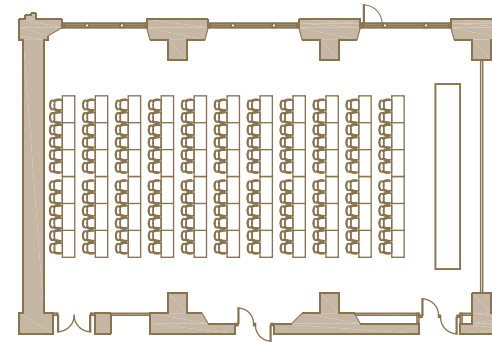
### THEATRE LAYOUT

*Capacity: 306*



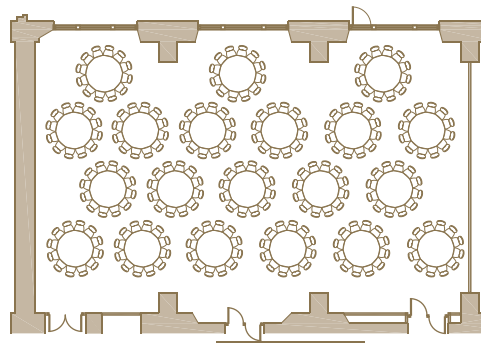
### CLASSROOM LAYOUT

*Capacity: 133*



### LUNCH/DINNER LAYOUT

*Capacity: 240*

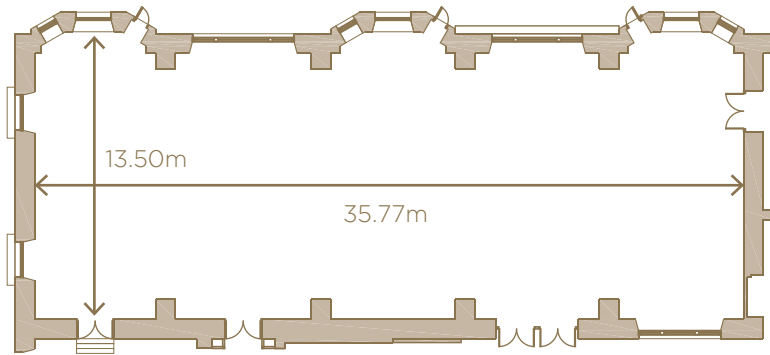


**FOR FURTHER INFORMATION PLEASE CONTACT OUR EVENT SALES TEAM:**

*event.sales@thelandmark.co.uk*

*+44 (0)20 7631 8271*

## MARBLE BALLROOM



### ROOM CAPACITY

RECEPTION/DRINKS: 500  
LUNCH / DINNER: 408  
DINNER & DANCE: 348  
SIT DOWN BUFFET: 324  
THEATRE FP: 380  
CLASSROOM FP: 224  
CABARET FP: 192  
BOARDROOM FP: 50  
BOARDROOM BP: 40

### ROOM FEATURES

- Floor to ceiling windows, natural daylight
- High ceiling: 6.25m (maximum height); 3.32m (chandelier height)
- Dedicated kitchen
- Dedicated Events Manager
- Easy loading access from street
- Group check-in location
- Original ornate architectural detail
- Space for 3 coaches for guest drop off
- 63 AWP phase power



**FOR FURTHER INFORMATION PLEASE CONTACT OUR EVENT SALES TEAM:**

*event.sales@thelandmark.co.uk*  
*+44 (0)20 7631 8271*

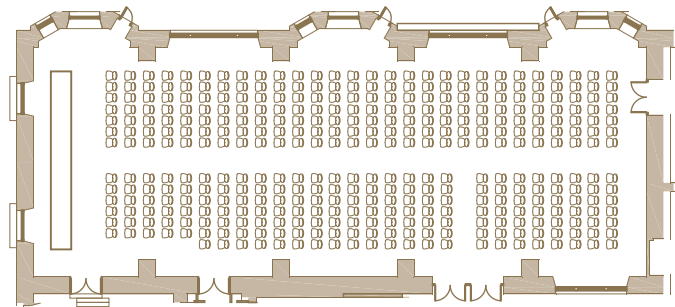
## MARBLE BALLROOM

---

### THEATRE LAYOUT

---

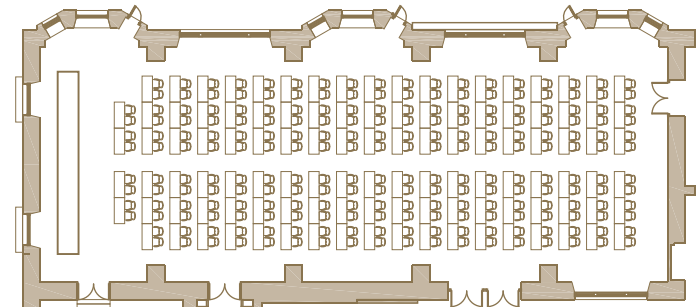
*Capacity: 380*



### CLASSROOM LAYOUT

---

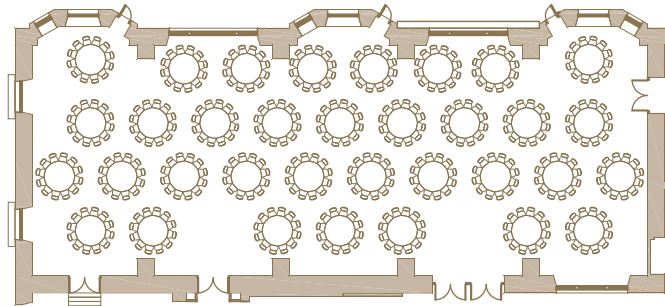
*Capacity: 224*



### LUNCH/DINNER LAYOUT

---

*Capacity: 408*

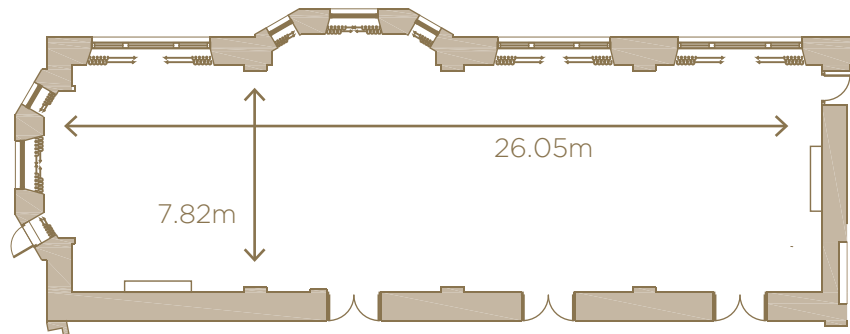


**FOR FURTHER INFORMATION PLEASE CONTACT OUR EVENT SALES TEAM:**

*event.sales@thelandmark.co.uk*

*+44 (0)20 7631 8271*

## EMPIRE ROOM



### ROOM CAPACITY

RECEPTION/ DRINKS: 250  
LUNCH / DINNER: 168  
DINNER / DANCE: 120  
SIT DOWN BUFFET: 120  
THEATRE FP: 220  
CLASSROOM FP/SLIMS: 120  
CABARET FP: 96  
BOARDROOM FP: 40  
U-SHAPE FP: 40  
U-SHAPE BP: 30

### ROOM FEATURES

- Floor to ceiling windows, natural daylight
- High ceiling: 6.23m (maximum height); 3.6m(chandelier height)
- Easy loading access from street
- Dedicated Events Manager
- Original ornate architectural detail
- 63 AWP phase power



**FOR FURTHER INFORMATION PLEASE CONTACT OUR EVENT SALES TEAM:**

*event.sales@thelandmark.co.uk*

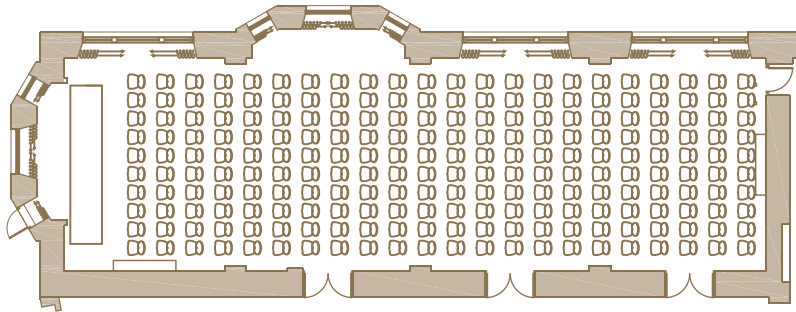
+44 (0)20 7631 8271



## EMPIRE ROOM

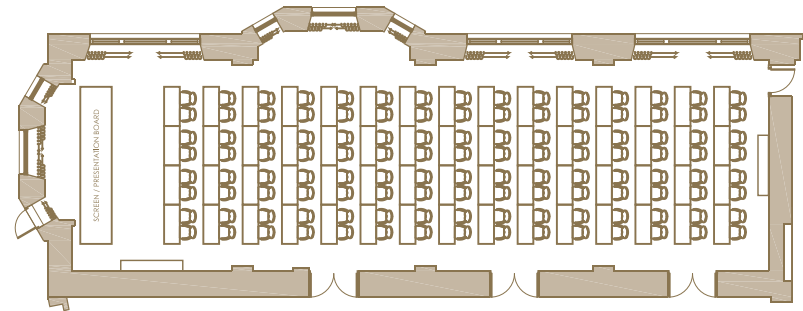
### THEATRE FP LAYOUT

*Capacity: 220*



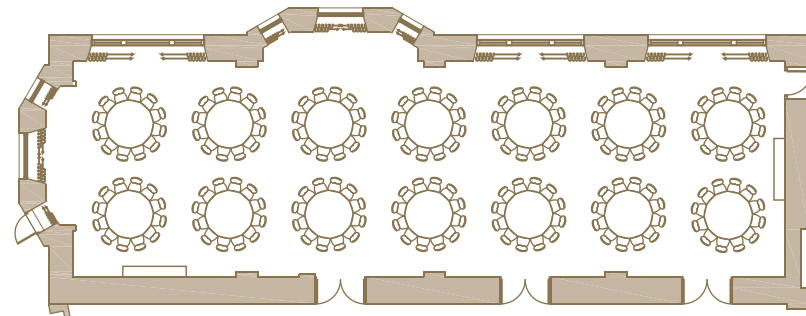
### CLASSROOM FP LAYOUT

*Capacity: 120*



### LUNCH/DINNER LAYOUT

*Capacity: 168*



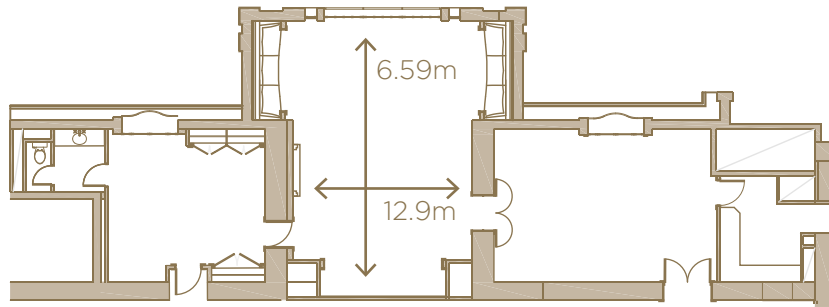
**FOR FURTHER INFORMATION PLEASE CONTACT OUR EVENT SALES TEAM:**

*event.sales@thelandmark.co.uk*

*+44 (0)20 7631 8271*



## TOWER SUITE



### ROOM CAPACITY

RECEPTION: 60  
LUNCH / DINNER: 36  
SIT DOWN BUFFET: 36  
THEATRE FP: 36  
CLASSROOM FP/SLIMS: 21  
CABARET FP: 24  
BOARDROOM FP: 25  
U-SHAPE FP: 25

### ROOM FEATURES

- Floor to ceiling windows and glass roof, natural daylight
- Breathtaking view onto the Atrium
- Dedicated Events Manager
- 3 different spaces
- Screen for presentations
- Coat rack
- Ceiling roof glinds



**FOR FURTHER INFORMATION PLEASE CONTACT OUR EVENT SALES TEAM:**

*event.sales@thelandmark.co.uk*

+44 (0)20 7631 8271

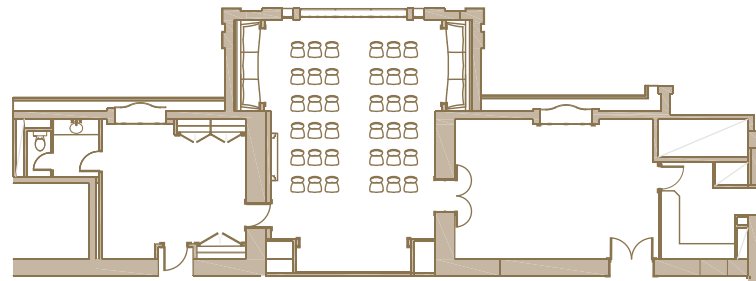
## TOWER SUITE

---

### THEATRE FP LAYOUT

---

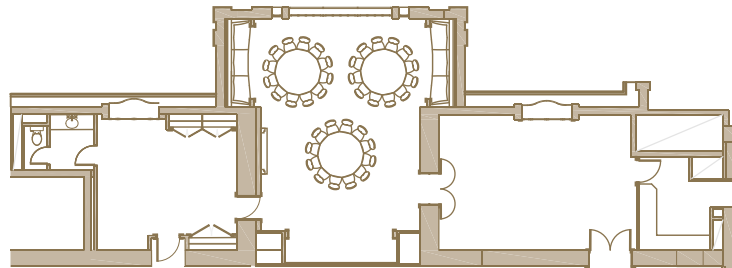
*Capacity: 36*



### LUNCH/DINNER LAYOUT

---

*Capacity: 36*



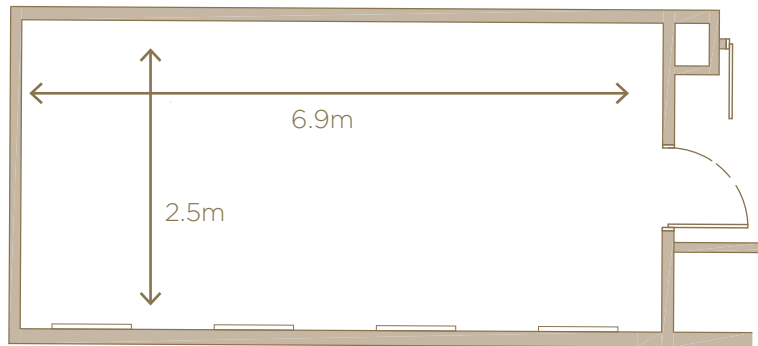
**FOR FURTHER INFORMATION PLEASE CONTACT OUR EVENT SALES TEAM:**

*event.sales@thelandmark.co.uk*

*+44 (0)20 7631 8271*

## INTERVIEW SUITE

---



### ROOM CAPACITY

---

BOARDROOM FP: 6

### ROOM FEATURES

---

- Dedicated Events Manager

**FOR FURTHER INFORMATION PLEASE CONTACT OUR EVENT SALES TEAM:**

*event.sales@thelandmark.co.uk*

+44 (0)20 7631 8271

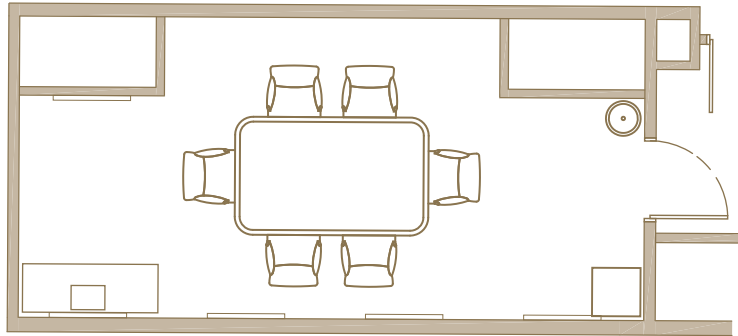
## INTERVIEW SUITE

---

### BOARDROOM FP

---

*Capacity: 6*

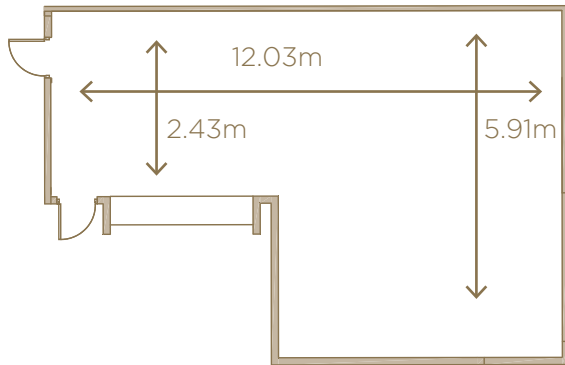


**FOR FURTHER INFORMATION PLEASE CONTACT OUR EVENT SALES TEAM:**

*event.sales@thelandmark.co.uk*

*+44 (0)20 7631 8271*

## LANDMARK 1



### ROOM CAPACITY

LUNCH / DINNER: 10  
SIT DOWN BUFFET: 10  
THEATRE FP: 36  
CLASSROOM FP/SLIMS: 21  
CABARET FP: 24  
BOARDROOM FP: 16  
U-SHAPE FP: 18

### ROOM FEATURES

- Dedicated Events Manager
- Screen for presentations
- 63 AWP phase power



**FOR FURTHER INFORMATION PLEASE CONTACT OUR EVENT SALES TEAM:**

*event.sales@thelandmark.co.uk*

+44 (0)20 7631 8271



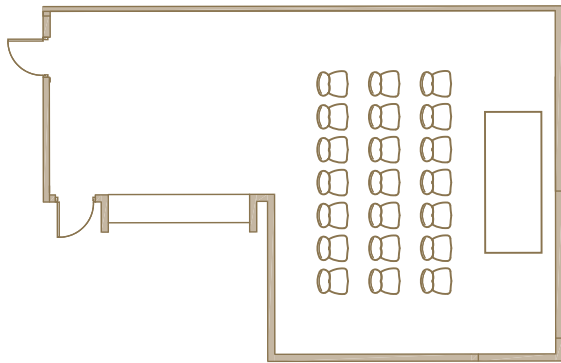
## LANDMARK 1

---

### THEATRE FP LAYOUT

---

*Capacity: 36*

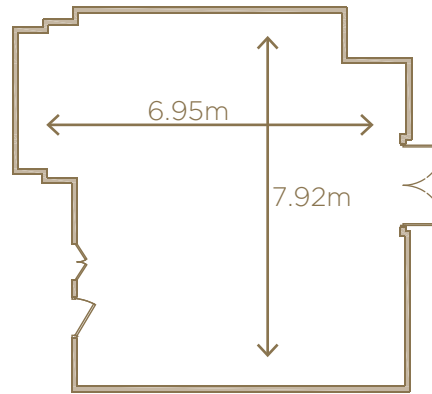
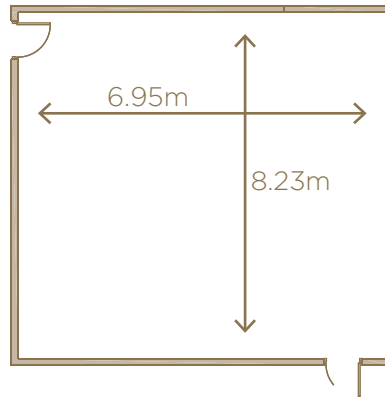


**FOR FURTHER INFORMATION PLEASE CONTACT OUR EVENT SALES TEAM:**

*event.sales@thelandmark.co.uk*

*+44 (0)20 7631 8271*

## LANDMARK 2 AND 3



### ROOM CAPACITY

LUNCH / DINNER: 20  
DINNER / DANCE: 20  
THEATRE FP: 36  
CLASSROOM FP/SLIMS: 21  
CABARET FP: 24  
BOARDROOM FP: 20  
U-SHAPE FP: 19

### ROOM FEATURES

- Dedicated Events Manager
- Screen for presentations
- 63 AWP phase power



**FOR FURTHER INFORMATION PLEASE CONTACT OUR EVENT SALES TEAM:**

*event.sales@thelandmark.co.uk*

+44 (0)20 7631 8271

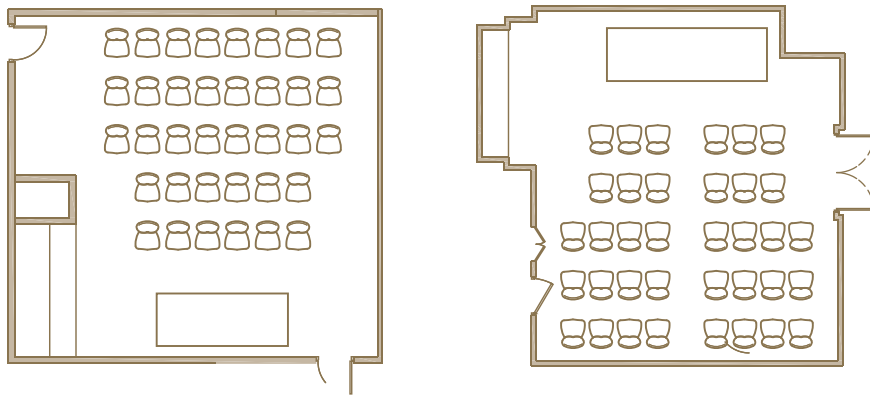
## LANDMARK 2 AND 3

---

### THEATRE FP LAYOUT

---

*Capacity: 36*



### CLASSROOM FP LAYOUT

---

*Capacity: 21*

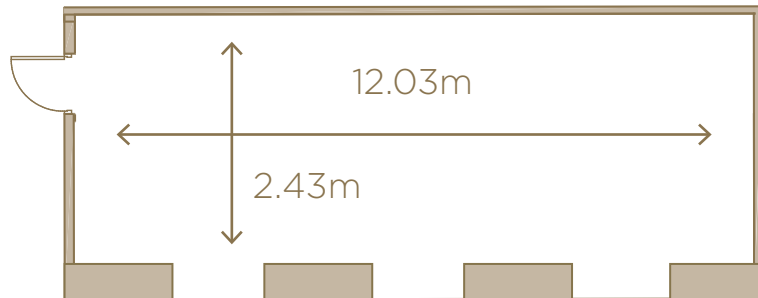


**FOR FURTHER INFORMATION PLEASE CONTACT OUR EVENT SALES TEAM:**

*event.sales@thelandmark.co.uk*

*+44 (0)20 7631 8271*

## EXECUTIVE BOARDROOM



### ROOM CAPACITY

BOARDROOM FP: 12

### ROOM FEATURES

- Dedicated Events Manager
- Screen for presentations
- 63 AWP phase power
- Natural daylight



**FOR FURTHER INFORMATION PLEASE CONTACT OUR EVENT SALES TEAM:**

*event.sales@thelandmark.co.uk*

+44 (0)20 7631 8271

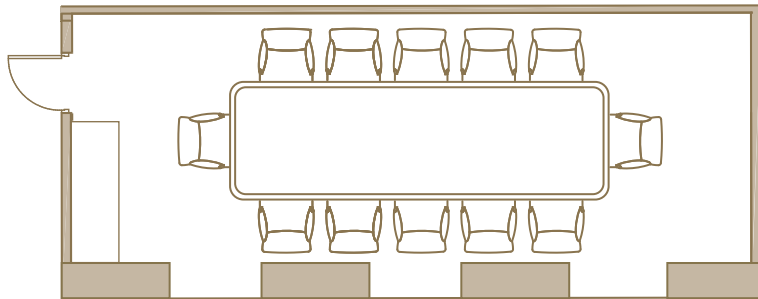
## EXECUTIVE BOARDROOM

---

### BOARDROOM LAYOUT

---

*Capacity: 12*



**FOR FURTHER INFORMATION PLEASE CONTACT OUR EVENT SALES TEAM:**

*event.sales@thelandmark.co.uk*

*+44 (0)20 7631 8271*