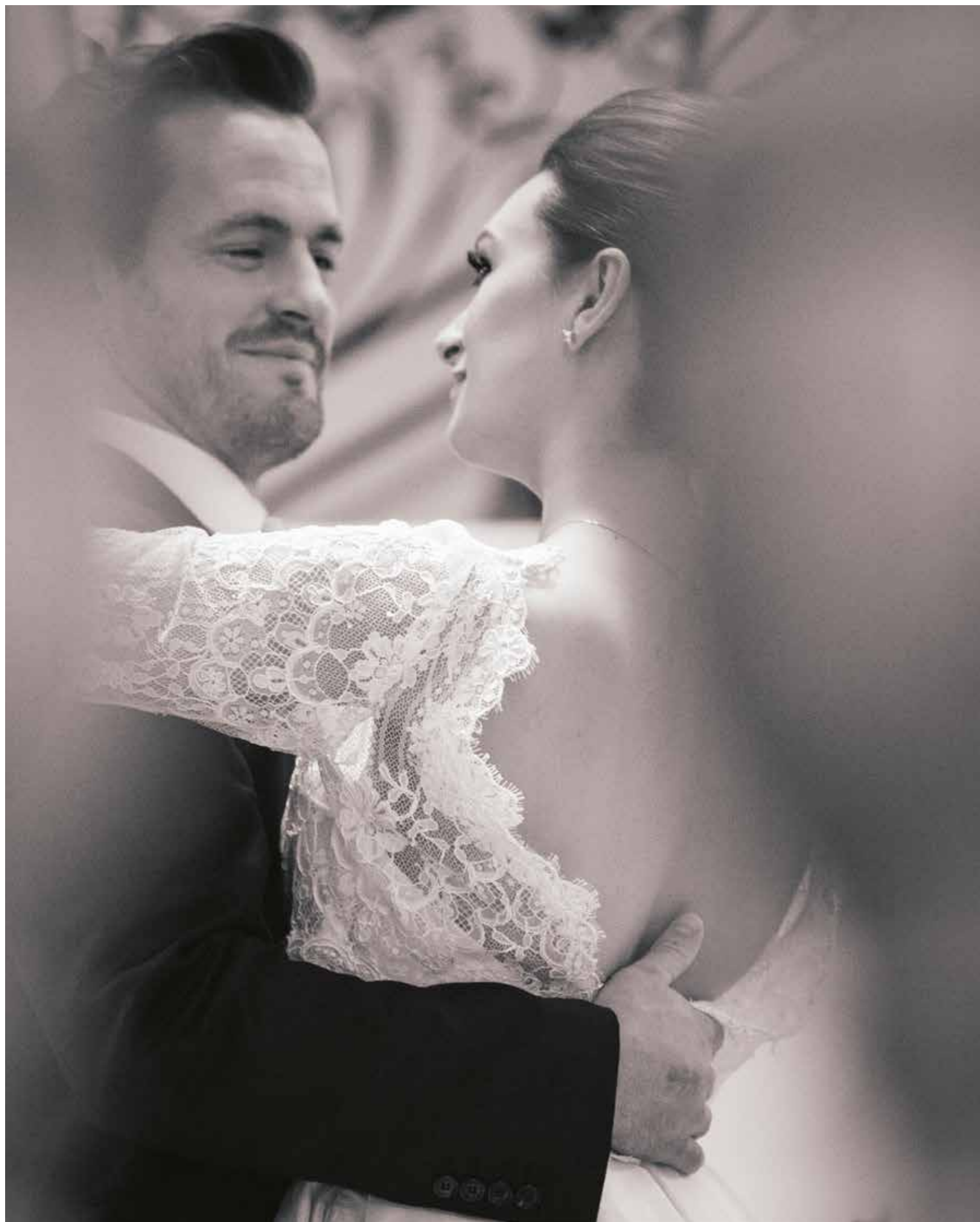


UNIQUE TO YOU

“THERE IS ONE
HAPPINESS IN
THIS LIFE,
TO LOVE AND
BE LOVED”

George Sand



INTRODUCTION

Welcome to The Landmark London where your fairy tale wedding begins.

From the moment you have decided to celebrate your love and share it with your nearest and dearest, we at The Landmark London will ensure that your wedding day is perfect.

**“YOU SAY “I DO”
WE WILL TAKE CARE
OF THE REST.”**

The
Landmark
LONDON





THE PERFECT VENUE

Whether you have planned for an intimate party or a large lavish wedding, we have something for you. With 11 stunning banqueting rooms of classic Victorian grandeur and featuring an abundance of natural daylight as well as floor to ceiling windows, The Landmark London is the perfect venue to celebrate this unforgettable occasion.

THE LANDMARK LONDON

“LOCATED AT THE HEART OF THE VIBRANT AND HISTORIC MARYLEBONE AREA, THE LANDMARK LONDON IS EASILY ACCESSIBLE.”





YOUR DAY, YOUR WAY

Celebrate your moment and let us help you create a wedding celebration that is distinctively “you”. Our dedicated and highly experienced team of Wedding Specialists are here to ensure that all your requirements are met.

“WE PROMISE YOU
UNPARALLELED
SERVICE.”





“NO REQUEST IS TOO
BIG AND NO DETAIL
IS TOO SMALL.”



EVERY DETAIL MATTERS

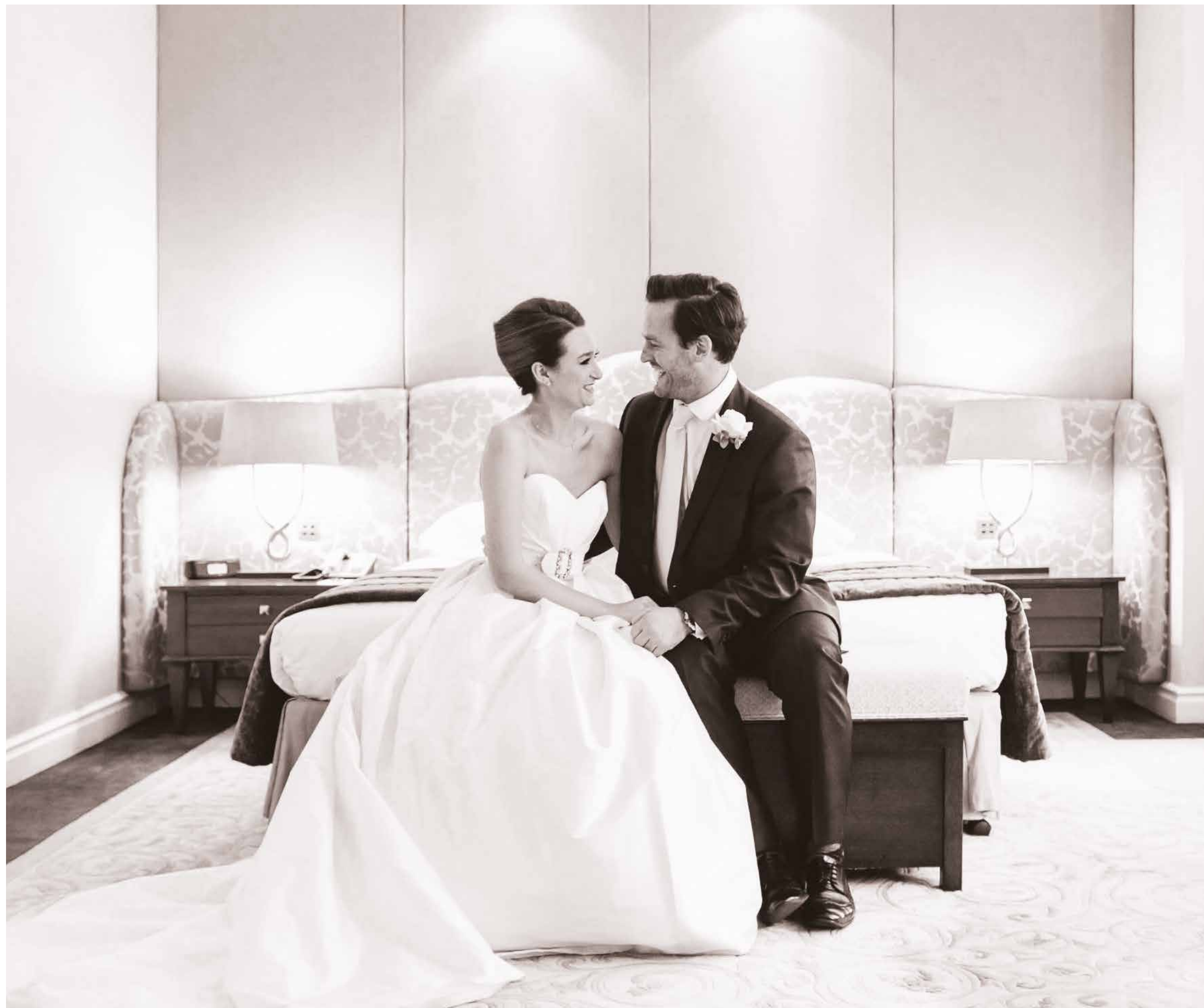
With over 14 years of experience in catering for weddings, our talented Executive Chef will help you create the perfect menu for the perfect day. Whether you have a taste for the familiar or a taste for something completely new, we can craft a bespoke menu that will please your palate.

“THE LANDMARK LONDON – HOME TO TIMELESS BRITISH LUXURY.”



HAPPILY EVER AFTER

End your fairy tale day and share your first night as a married couple in one of our sumptuous suites. We offer a choice of six different suite categories, all truly stunning and among the most spacious in London. All our 300 guest rooms including 51 suites have been designed to ensure that the first day of the rest of your lives will be as memorable as your wedding day.







PARTIES & PRIVATE DINING

From baby showers to birthday parties and bar/bat mitzvahs, let us be part of your special moments. Our resourceful and creative team will be on hand to provide you with refreshing ideas and assist with your every need. Just let us know what you are looking for and we will make it happen.

THE LANDMARK LONDON

“LIFE IS FULL
OF HAPPY LITTLE
SURPRISES.”

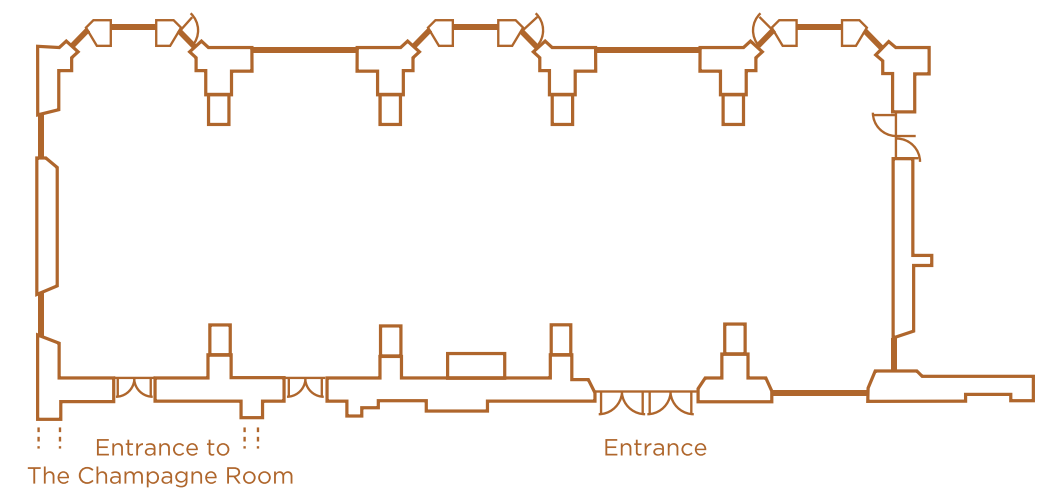
“THE LANDMARK
LONDON’S
SPECTACULAR
BANQUETING
ROOMS ARE SOME
OF THE FINEST
VENUES FOR
LUXURY HOTEL
WEDDINGS
IN LONDON.”

BALLROOM

With imposing marble pillars, large windows and chandeliers crowning the ceiling, the Ballroom has been the setting for many weddings and balls. Our Ballroom accommodates 500 guests for receptions or 348 for a dinner dance.

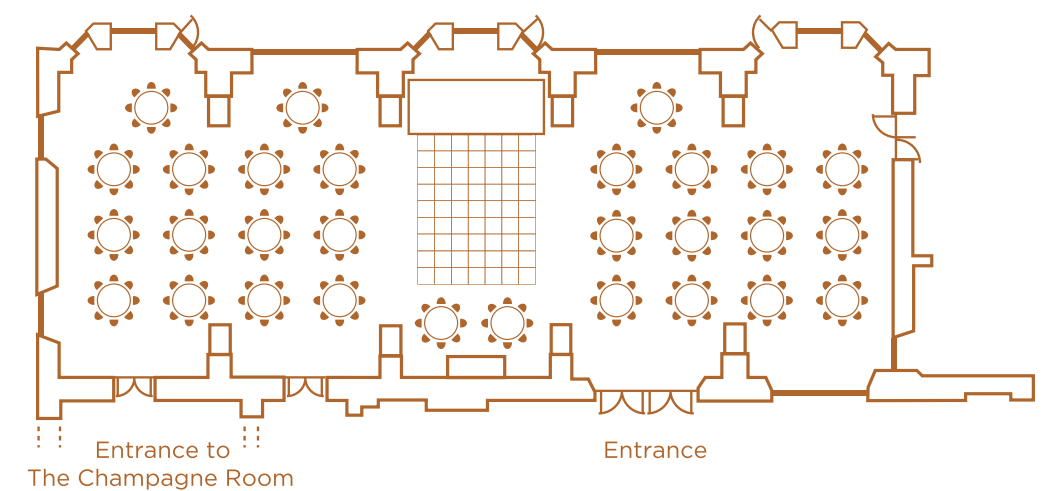
KEY FACTS:

Dimensions	13.50 x 35.77m / 44.50 x 117.30ft
Total area	478m ² / 5145ft ²



CAPACITY:

Breakfast, Lunch or Dinner	408
Dinner Dance	348
Reception	500
Ceremony	380



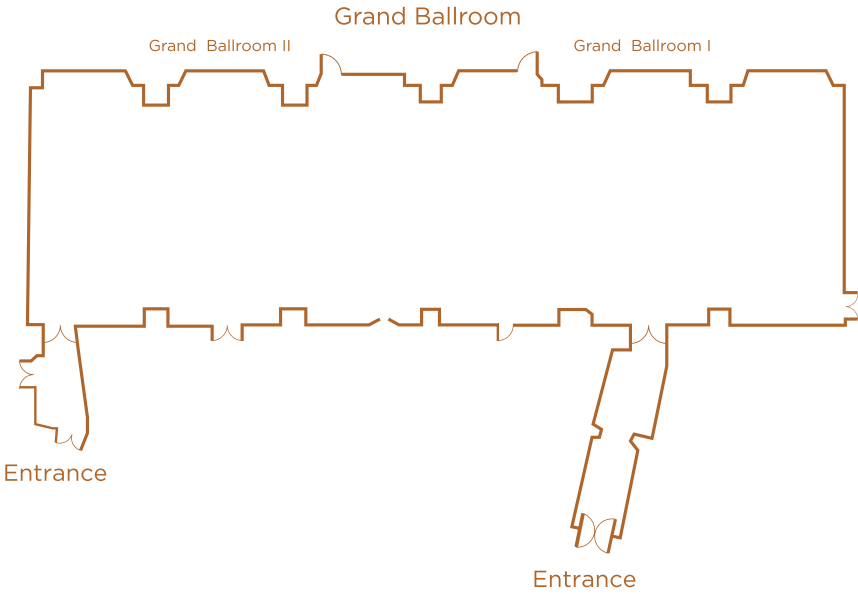


GRAND BALLROOM

The most spacious of all our event venues with floor-to-ceiling windows, and crystal chandeliers, our Grand Ballroom can hold 750 for receptions and 432 for a dinner dance. You can choose to use this room as one or as two separate rooms.

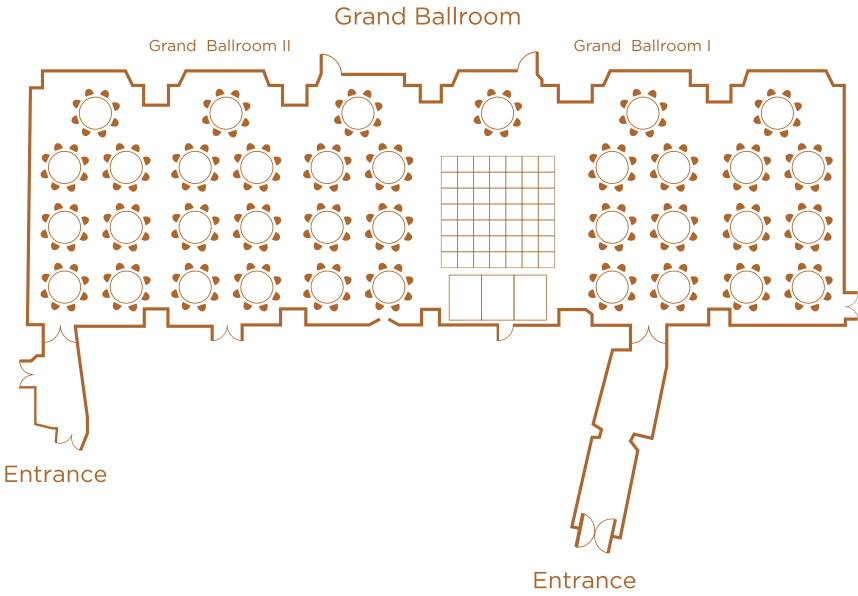
KEY FACTS:

Dimensions	13.59 x 42.90 / 44.60 x 140.90ft
Total area	610m ² / 6565ft ²



CAPACITY:

Breakfast, Lunch or Dinner	504
Dinner Dance	432
Reception	750
Ceremony	512



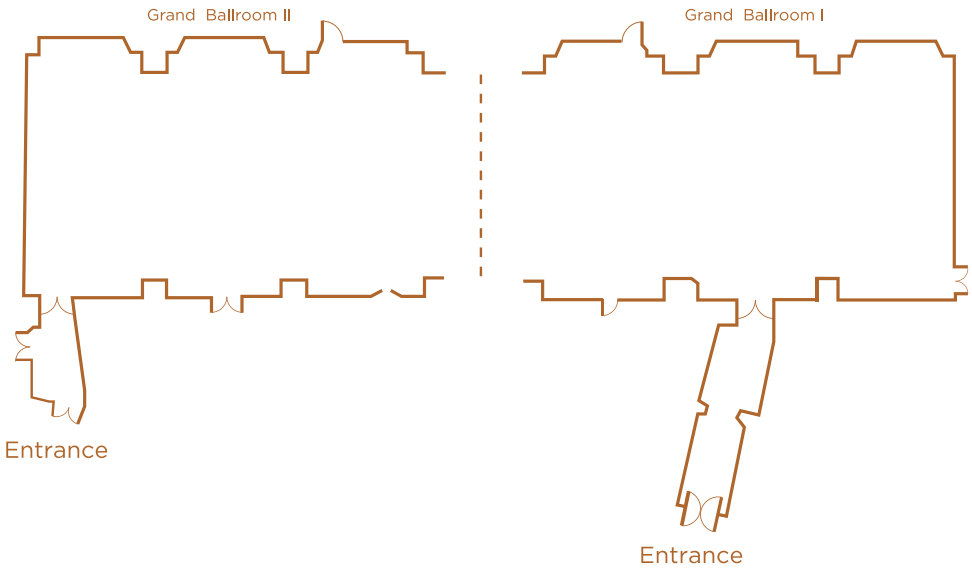


GRAND BALLROOM I & II

These versatile and charming rooms boast a luxurious and elegant finish. Both rooms can be opened up to connect into the larger Grand Ballroom. Each individual room can accommodate 350 for receptions and 180 for a dinner dance.

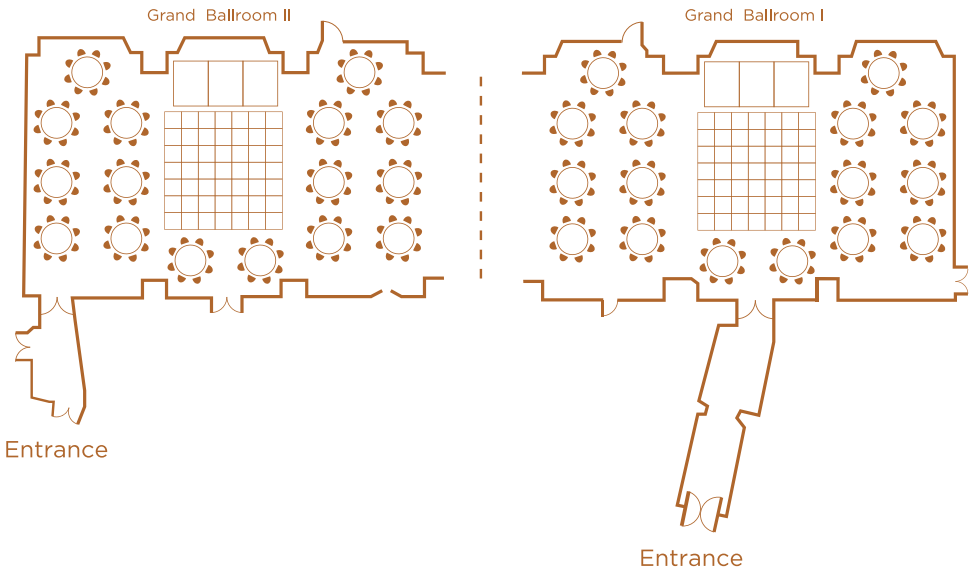
KEY FACTS:

Dimensions	13.59 x 21.81 / 44.60 x 71.60ft
Total area	318m ² / 3422ft ²



CAPACITY:

Breakfast, Lunch or Dinner	240
Dinner Dance	180
Reception	350
Ceremony	300

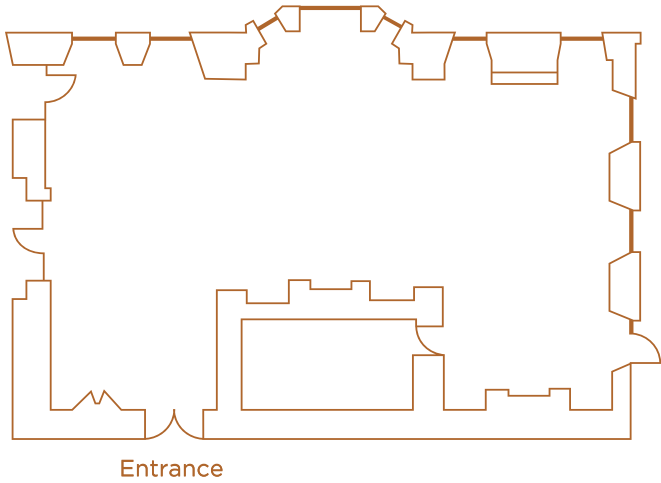




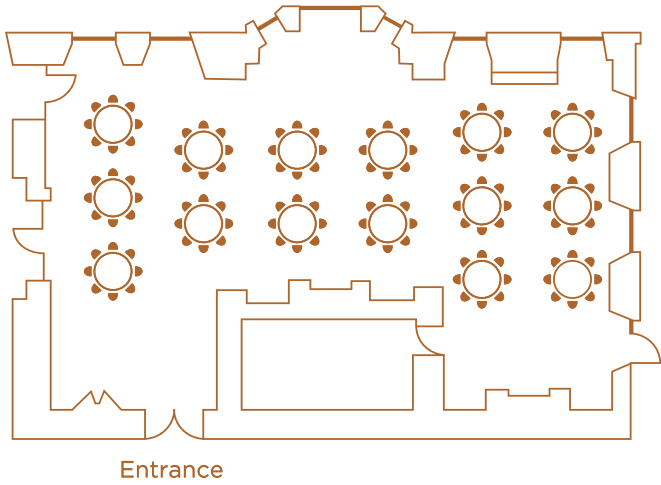
DRAWING ROOM

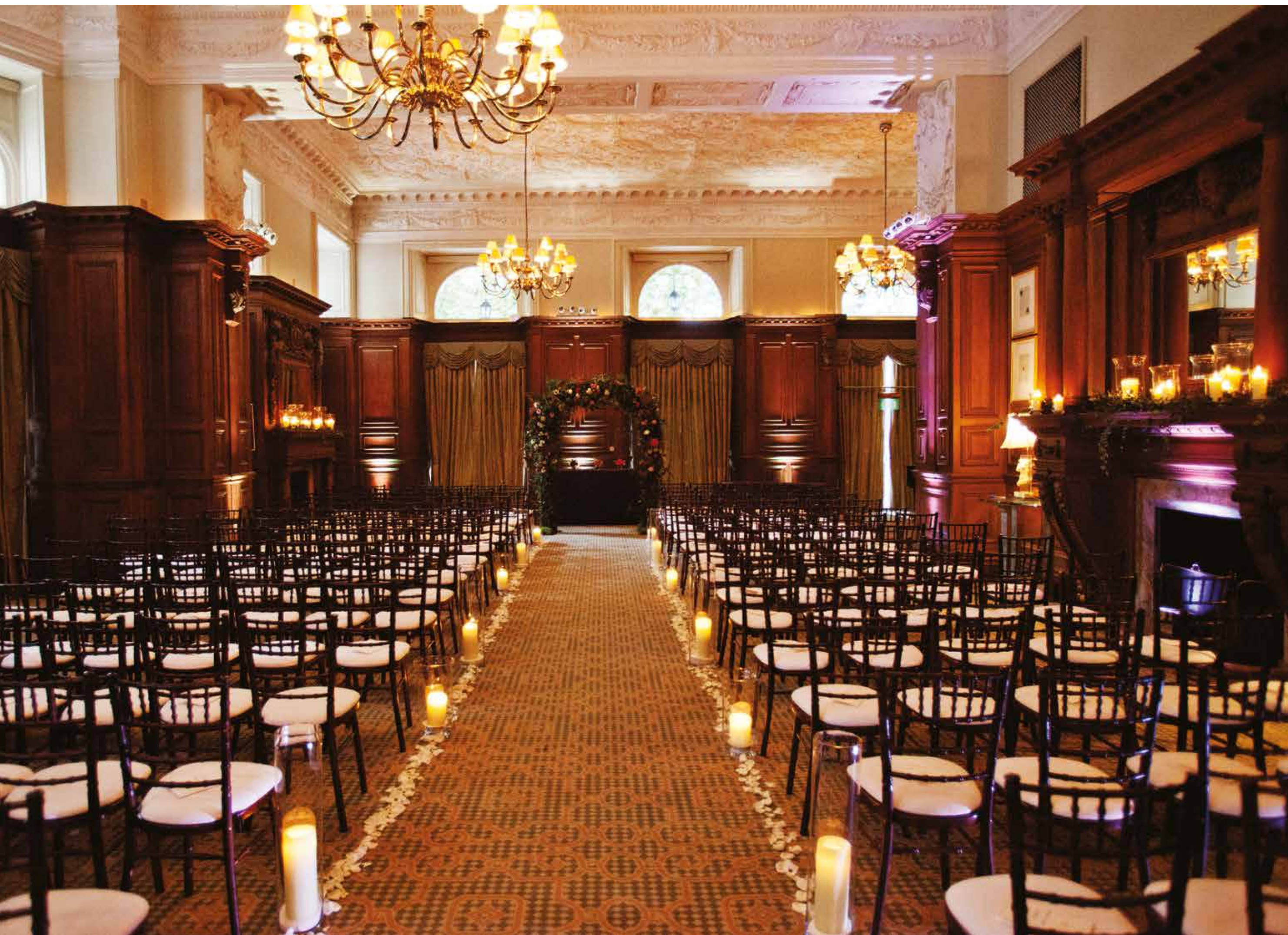
Boasting original décor dating from when the hotel opened in 1899, the Drawing room has its own personality which is accentuated by the fine wood panelling and other unique architectural features. It can accommodate 300 for receptions and up to 132 for a dinner dance.

KEY FACTS:	
Dimensions	12.86 x 21.44m / 42.20 x 70.40ft
Total area	254m ² / 2734ft ²



CAPACITY:	
Breakfast, Lunch or Dinner	180
Dinner Dance	132
Reception	300
Ceremony	180



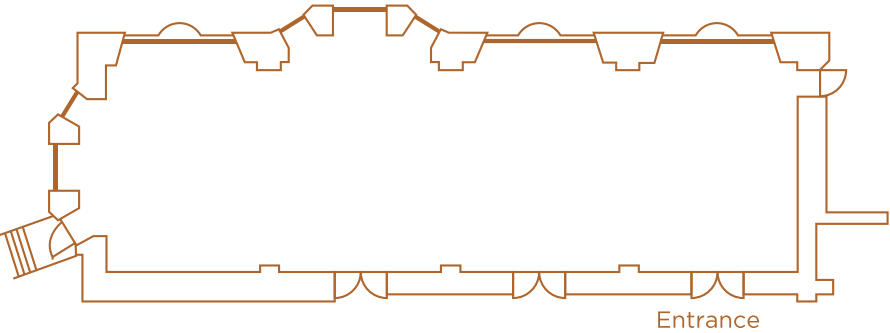


EMPIRE ROOM

Basked in natural daylight within the surroundings of gentle pastel colours, the Empire room can accommodate up to 250 for receptions or 120 for a dinner dance.

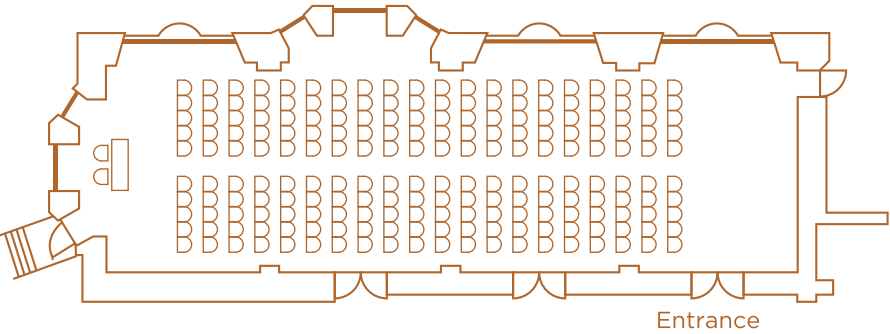
KEY FACTS:

Dimensions	7.82 x 26.05m / 25.70 x 85.50ft
Total area	222m ² / 2389ft ²



CAPACITY:

Breakfast, Lunch or Dinner	168
Dinner Dance	120
Reception	250
Ceremony	200



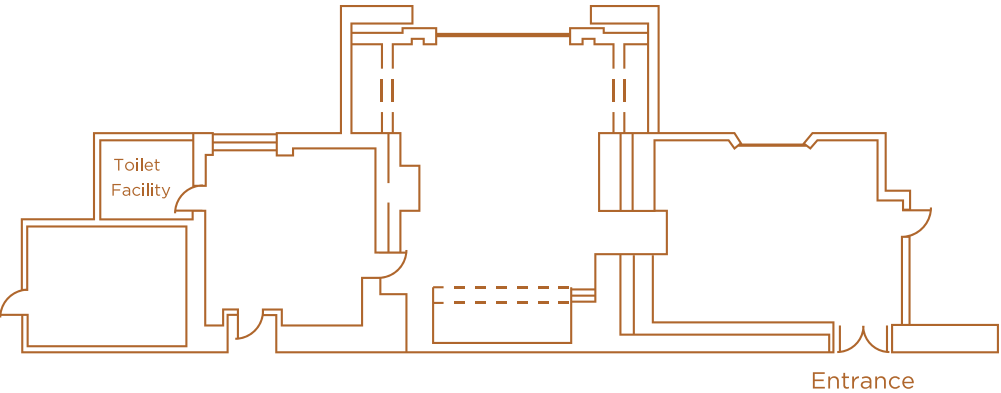


TOWER SUITE

Located on the fifth floor and overlooking our magnificent atrium, our Tower suite is bright and airy. It is utterly beautiful and intimate making it ideally suited for receptions up to 60 guests or dining up to 36.

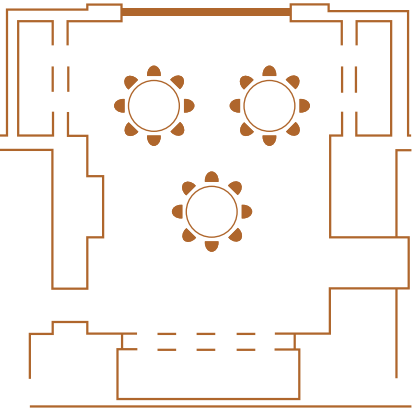
KEY FACTS:

Dimensions	6.59 x 12.90m / 21.70 x 23.70ft
Total area	57m ² / 613ft ²



CAPACITY:

Breakfast, Lunch or Dinner	36
Dinner Dance	-
Reception	60
Ceremony	40



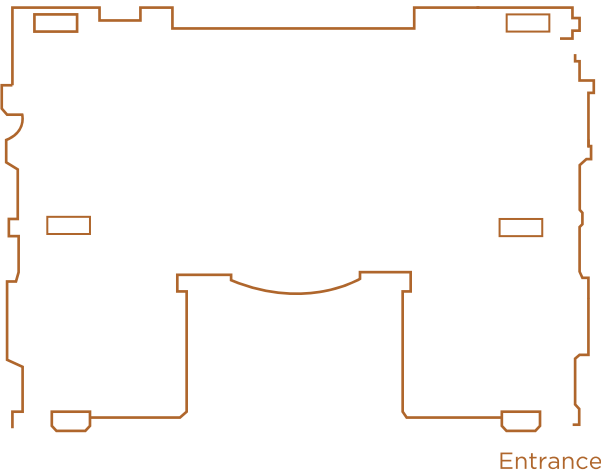


GAZEBO

Undoubtedly one of London’s most sought after venues, our Gazebo lies at the heart of the hotel under a stunning eight storey glass atrium. It is perfectly suited for drinks receptions up to 300 guests.

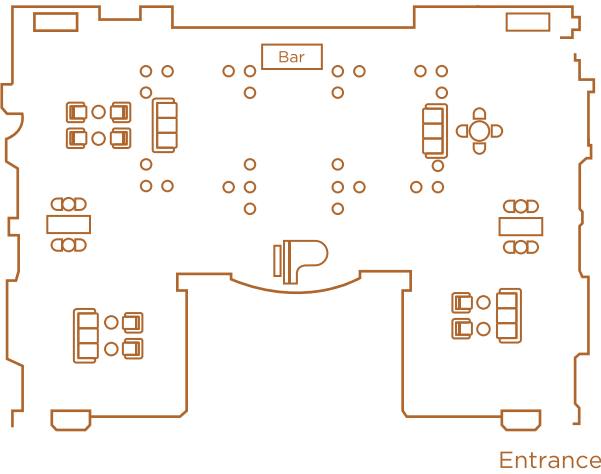
KEY FACTS:

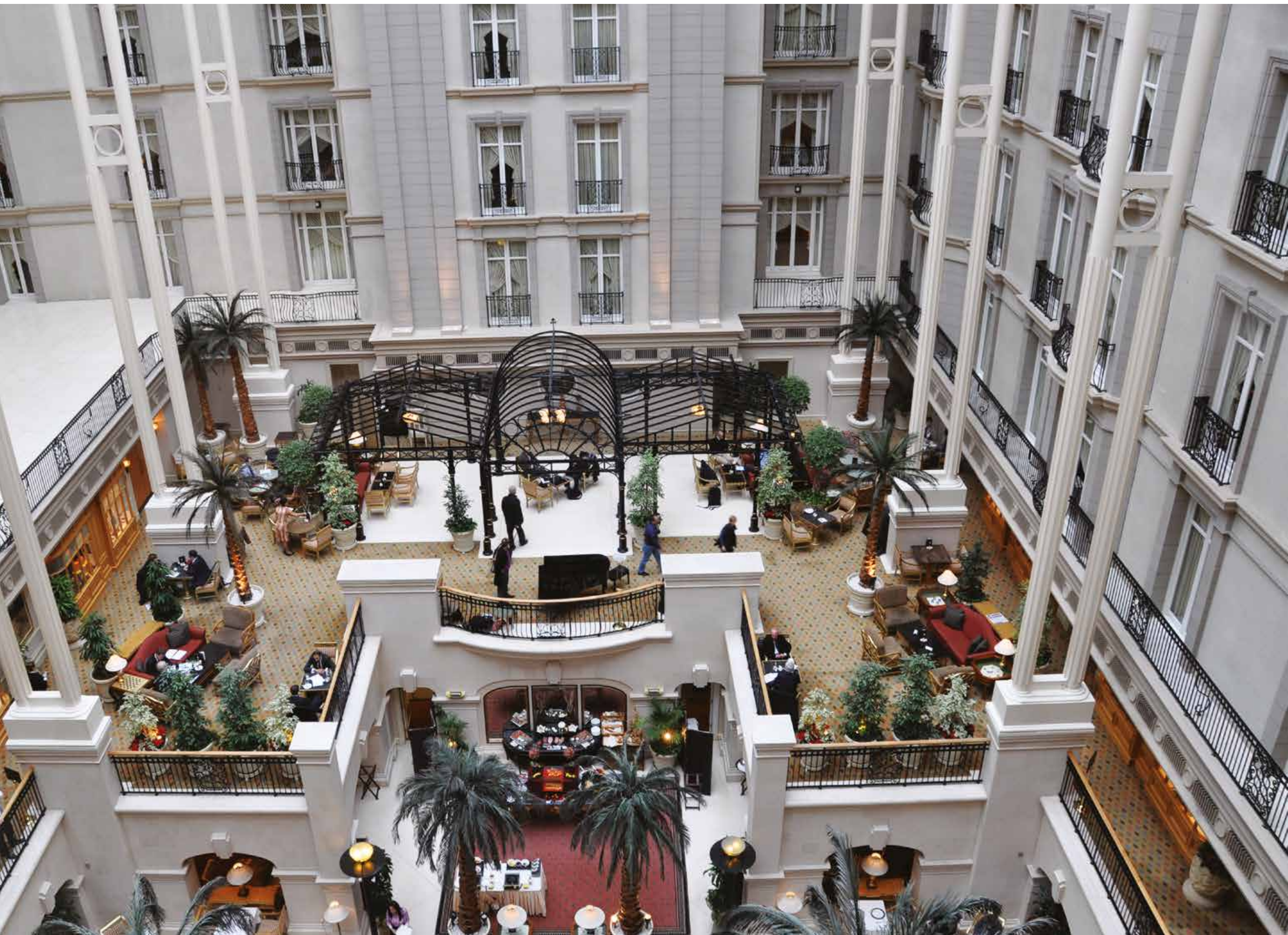
Dimensions	23.26 x 9.94m /76.30 x 32.60ft
Total area	231m ² / 2487ft ²



CAPACITY:

Dinner Dance	-
Reception	300
Ceremony	-







ONLY AT THE LANDMARK LONDON

JUST FOR YOU

- Dedicated wedding planner
- Menu tasting for weddings over 100 guests
- Complimentary suite on your wedding night
- Preferred room rates for guests in the wedding party

HOTEL FACILITIES

- 300 immaculate and spacious guest rooms including 51 suites
- The Winter Garden restaurant
- twotwentytwo restaurant and bar
- The Mirror Bar
- Spa & Health Club
- 11 Conference and Banqueting rooms

HOW TO FIND US

Nestled in one of London’s most upmarket districts and close to all main attractions and amenities, the hotel is directly opposite Marylebone railway and tube station. The Landmark London is also within a few minutes’ walk to the beautiful Regent’s Park, providing a perfect backdrop for your wedding photography. Additionally, with our accessible location, it will be easy for your guests to get to the hotel.

London’s main airports can all be reached in less than an hour.

From Heathrow Airport

The Heathrow Express takes 15 minutes to Paddington Station. From Paddington Station, the hotel is five minutes by taxi or two stops by tube to Marylebone station.

From Gatwick Airport

The Gatwick Express terminates at Victoria Station, which is a 15 minute taxi ride from The Landmark London.

CREDITS

Photography by Georgie Lord and Jay Rowden | Lucy J Toms | Kate Nielsen | Chiko Photography (page 52-53)
Make up by Kelly Hooper
Wedding cake by Peggy Porschen and Elizabeth’s Cake Emporium
Flowers by NB Flowers
Wedding gown and bridesmaid dress by Stephanie Allin and Two birds
Design by Garcia Lau



222 Marylebone Road, London, NW1 6JQ

Tel: +44(0)20 7631 8000

specialistweddings@thelandmark.co.uk

www.landmarklondon.co.uk